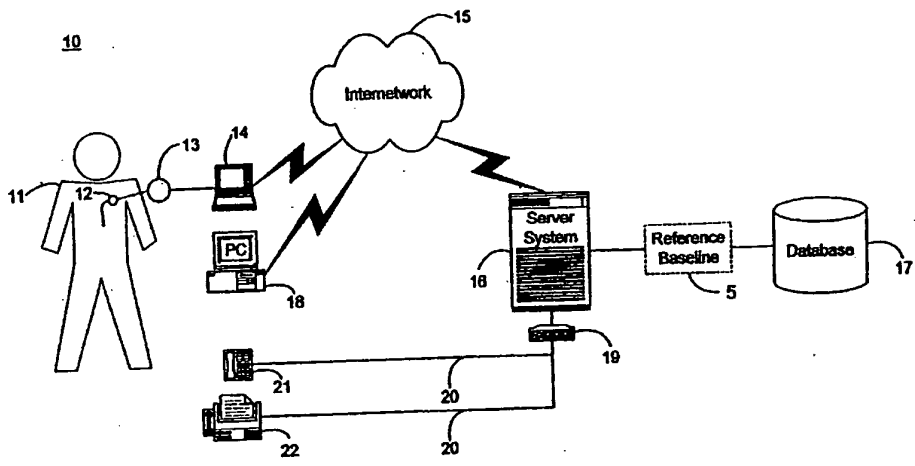




- (72) BARDY, GUST H., US
- (71) BARDY, GUST H., US
- (51) Int. Cl.⁷ G06F 17/60, G06F 17/30, H04L 12/16
- (30) 1999/07/26 (09/361,332) US
- (30) 1999/12/31 (09/476,601) US

(54) **SYSTEME ET METHODE DE DETERMINATION DU NIVEAU DE REFERENCE DE L'ETAT D'UN PATIENT POUR UTILISATION DANS UN SYSTEME AUTOMATISE DE COLLECTE ET D'ANALYSE DE DONNEES SUR LES SOINS AUX PATIENTS**

(54) **SYSTEM AND METHOD FOR DETERMINING A REFERENCE BASELINE OF INDIVIDUAL PATIENT STATUS FOR USE IN AN AUTOMATED COLLECTION AND ANALYSIS PATIENT CARE SYSTEM**



(57) A system and method for determining a reference baseline of individual patient status for use in an automated collection and analysis patient care system is described. A set of measures collected from a medical device having a sensor for monitoring at least one physiological measure of an individual patient is received. The collected device measures set includes individual measures which each relate to patient information recorded by the medical device during an initial time period. The collected device measures set are stored into a patient care record for the individual patient within a database organized to store one or more patient care records. The collected device measures set is processed into a set of reference measures. Each reference measure is representative of at least one of measured or derived patient information. The reference measures set is stored into the patient care record as data in a reference baseline indicating an initial patient status.

**SYSTEM AND METHOD FOR DETERMINING A REFERENCE
BASELINE OF INDIVIDUAL PATIENT STATUS FOR USE IN AN
AUTOMATED COLLECTION AND ANALYSIS PATIENT CARE
SYSTEM**

Abstract

5

A system and method for determining a reference baseline of individual patient status for use in an automated collection and analysis patient care system is described. A set of measures collected from a medical device having a sensor for monitoring at least one physiological measure of an individual patient is received. The collected device measures set includes individual measures which each relate to patient information recorded by the medical device during an initial time period. The collected device measures set are stored into a patient care record for the individual patient within a database organized to store one or more patient care records. The collected device measures set is processed into a set of reference measures. Each reference measure is representative of at least one of measured or derived patient information. The reference measures set is stored into the patient care record as data in a reference baseline indicating an initial patient status.

5

10 **SYSTEM AND METHOD FOR DETERMINING A REFERENCE
BASELINE OF INDIVIDUAL PATIENT STATUS FOR USE IN AN
AUTOMATED COLLECTION AND ANALYSIS PATIENT CARE
SYSTEM**

Cross-Reference to Related Application

This patent application is a continuation-in-part of commonly owned U.S.
patent application, Serial No. 09/361,332, filed July 26, 1999, pending, the
15 disclosure of which is incorporated herein by reference.

Field of the Invention

The present invention relates in general to automated data collection and
analysis, and, in particular, to a system and method for determining a reference
baseline of individual patient status for use in an automated collection and
20 analysis patient care system.

Background of the Invention

A broad class of medical subspecialties, including cardiology,
endocrinology, hematology, neurology, gastroenterology, urology,
ophthalmology, and otolaryngology, to name a few, rely on accurate and timely
25 patient information for use in aiding health care providers in diagnosing and
treating diseases and disorders. Often, proper medical diagnosis requires
information on physiological events of short duration and sudden onset, yet these
types of events are often occur infrequently and with little or no warning.
Fortunately, such patient information can be obtained via external, implantable,

cutaneous, subcutaneous, and manual medical devices, and combinations thereof. For example, in the area of cardiology, implantable pulse generators (IPGs) are medical devices commonly used to treat irregular heartbeats, known as arrhythmias. There are three basic types of IPGs. Cardiac pacemakers are used to
5 manage bradycardia, an abnormally slow or irregular heartbeat. Bradycardia can cause symptoms such as fatigue, dizziness, and fainting. Implantable cardioverter defibrillators (ICDs) are used to treat tachycardia, heart rhythms that are abnormally fast and life threatening. Tachycardia can result in sudden cardiac death (SCD). Finally, implantable cardiovascular monitors and therapeutic
10 devices are used to monitor and treat structural problems of the heart, such as congestive heart failure, as well as rhythm problems.

Pacemakers and ICDs, as well as other types of implantable and external medical devices, are equipped with an on-board, volatile memory in which telemetered signals can be stored for later retrieval and analysis. In addition, a
15 growing class of cardiac medical devices, including implantable heart failure monitors, implantable event monitors, cardiovascular monitors, and therapy devices, are being used to provide similar stored device information. These devices are able to store more than thirty minutes of per heartbeat data. Typically, the telemetered signals can provide patient device information recorded on a per
20 heartbeat, binned average basis, or derived basis from, for example, atrial electrical activity, ventricular electrical activity, minute ventilation, patient activity score, cardiac output score, mixed venous oxygen score, cardiovascular pressure measures, time of day, and any interventions and the relative success of such interventions. In addition, many such devices can have multiple sensors, or
25 several devices can work together, for monitoring different sites within a patient's body.

These telemetered signals can be remotely collected and analyzed using an automated patient care system. One such system is described in a related, commonly-owned U.S. Patent application, Serial No. 09/324,894, filed June 3,
30 1999, pending. The telemetered signals are recorded by an implantable medical

device, such as an IPG or monitor, and periodically retrieved using an interrogator, programmer, telemetered signals transceiver, or similar device, for subsequent download. The downloaded telemetered signals are received by a network server on a regular, e.g., daily, basis as sets of collected measures which
5 are stored along with other patient records in a database. The information is analyzed in an automated fashion and feedback, which includes a patient status indicator, is provided to the patient.

While such a system can serve as a valuable tool in automated, remote patient care, the accuracy of the patient care, particularly during the first few
10 weeks of care, and the quality of the feedback provided to the patient would benefit from being normalized to a reference baseline of patient wellness. In particular, a starting point needs to be established for each individual patient for use in any such system in which medical device information, such as telemetered signals from implantable and external medical devices, is continuously monitored,
15 collected, and analyzed. The starting point could serve as a reference baseline indicating overall patient status and wellness from the outset of remote patient care.

In addition, automated remote patient care poses a further challenge vis-à-vis evaluating quality of life issues. Unlike in a traditional clinical setting,
20 physicians participating in providing remote patient care are not able to interact with their patients in person. Consequently, quality of life measures, such as how the patient subjectively looks and feels, whether the patient has shortness of breath, can work, can sleep, is depressed, is sexually active, can perform activities of daily life, and so on, cannot be implicitly gathered and evaluated.

25 Reference baseline health assessments are widely used in conventional patient health care monitoring services. Typically, a patient's vital signs, consisting of heart rate, blood pressure, weight, and blood sugar level, are measured both at the outset of care and periodically throughout the period of service. However, these measures are limited in their usefulness and do not
30 provide the scope of detailed medical information made available through

implantable and external medical devices. Moreover, such measures are generally obtained through manual means and do not ordinarily directly tie into quality of life assessments. Further, a significant amount of time generally passes between the collection of sets of these measures.

5 In addition, the uses of multiple sensors situated within a patient's body at multiple sites are disclosed in U.S. Patent No. 5,040,536 ('536) and U.S. Patent 5,987,352 ('352). In the '536 patent, an intravascular pressure posture detector includes at least two pressure sensors implanted in different places in the cardiovascular system, such that differences in pressure with changes in posture
10 are differentially measurable. However, the physiological measurements are used locally within the device, or in conjunction with any implantable device, to effect a therapeutic treatment. In the '352 patent, an event monitor can include additional sensors for monitoring and recording physiological signals during arrhythmia and syncopal events. The recorded signals can be used for diagnosis,
15 research or therapeutic study, although no systematic approach to analyzing these signals, particularly with respect to peer and general population groups, is presented.

 Thus, there is a need for an approach to determining a meaningful reference baseline of individual patient status for use in a system and method for
20 providing automated, remote patient care through the continuous monitoring and analysis of patient information retrieved from an implantable medical device. Preferably, such an approach would establish the reference baseline through initially received measures or after a reasonable period of observation. The reference baseline could be tied to the completion of a set of prescribed physical
25 stressors. Periodic reassessments should be obtainable as necessary. Moreover, the reference baseline should preferably be capable of correlation to quality of life assessments.

 There is a further need for an approach to monitoring patient wellness based on a reference baseline for use in an automated patient care system.
30 Preferably, such an approach would dynamically determine whether the patient is

trending into an area of potential medical concern, including indicating disease onset, progression, regression, and status quo.

There is a further need for an approach to determining a situation in which remote patient care is inappropriate based on a reference baseline of patient wellness. Preferably, such an approach would include a range of acceptance parameters as part of the reference baseline, thereby enabling those potential patients whose reference baseline falls outside those acceptance parameters to be identified.

Summary of the Invention

10 The present invention provides a system and method for determining a reference baseline for use in an automated collection and analysis patient care system. The present invention further provides a system and method for monitoring a patient status using a reference baseline in an automated collection and analysis patient care system.

15 An embodiment of the present invention is a system, method, and storage medium for determining a reference baseline of individual patient status for use in an automated collection and analysis patient care system. A set of collected measures is retrieved from a medical device adapted to be implanted in a patient. The collected device measures set includes individual measures which each relate to patient information recorded by the medical device adapted to be implanted during an initial time period. The collected device measures set is received from the medical device adapted to be implanted over a communications link which is interfaced to a network server. The collected device measures set is stored into a patient care record for the individual patient within a database server organized to store one or more patient care records. The collected device measures set is processed into a set of reference measures. Each reference measure is representative of at least one of measured or derived patient information. The reference measures set is stored into the patient care record as data in a reference baseline indicating an initial patient status.

A further embodiment of the present invention is a system, method, and storage medium for monitoring a patient status for an individual patient using a reference baseline in an automated collection and analysis patient care system. A set of collected measures recorded by a medical device adapted to be implanted in an individual patient is processed into a set of reference measures. The reference measures set is stored into a patient care record as data in a reference baseline indicating an initial patient status. The patient care record is stored within a database server. The collected device measures set includes individual measures which each relate to patient information recorded by the medical device adapted to be implanted throughout an initial time period. Each reference measure is representative of at least one of measured or derived patient information. A set of collected measures is periodically received from the medical device adapted to be implanted over a communications link which is interfaced to a network server. The collected device measures set includes individual measures which each relate to patient information recorded by the medical device adapted to be implanted subsequent to the initial time period. The subsequently collected device measures set is stored into the patient care record for the individual patient. One or more of the subsequently collected device measures sets in the patient care record are compared to the reference measures set. Any such subsequently collected measure substantially non-conforming to the corresponding reference measure is identified.

A further embodiment of the present invention is a system and method for determining a reference baseline of individual patient status for use in an automated collection and analysis patient care system is described. A set of measures collected from a medical device having a sensor for monitoring at least one physiological measure of an individual patient is received. The collected device measures set includes individual measures which each relate to patient information recorded by the medical device during an initial time period. The collected device measures set are stored into a patient care record for the individual patient within a database organized to store one or more patient care

records. The collected device measures set is processed into a set of reference measures. Each reference measure is representative of at least one of measured or derived patient information. The reference measures set is stored into the patient care record as data in a reference baseline indicating an initial patient status.

5 The present invention provides a meaningful, quantitative measure of patient wellness for use as a reference baseline in an automated system and method for continuous, remote patient care. The reference baseline increases the accuracy of remote patient care, particularly during the first few weeks of care, by providing a grounded starting assessment of the patient's health and well-being.

10 A collateral benefit of the reference baseline is the removal of physician "bias" which can occur when the apparent normal outward appearance of a patient belies an underlying condition that potentially requires medical attention. The reference baseline serves to objectify a patient's self-assessment of wellness.

15 The present invention also provides an objective approach to humanizing the raw measures recorded by medical devices, including implantable medical devices. Using known quality of life assessment instruments, a patient can be evaluated and scored for relative quality of life at a given point in time. The reference baseline of the present invention provides a means for correlating the quality of life assessment to machine-recorded measures, thereby assisting a
20 physician in furthering patient care.

 Finally, the present invention improves the chronicling of legal responsibility in patient care. A prescribed course of treatment can be traced back to a grounded point in time memorialized by the reference baseline. Thus, a medical audit trail can be generated with a higher degree of accuracy and
25 certainty based on having an established originating point of reference.

 Still other embodiments of the present invention will become readily apparent to those skilled in the art from the following detailed description, wherein is described embodiments of the invention by way of illustrating the best mode contemplated for carrying out the invention. As will be realized, the
30 invention is capable of other and different embodiments and its several details are

capable of modifications in various obvious respects, all without departing from the spirit and the scope of the present invention. Accordingly, the drawings and detailed description are to be regarded as illustrative in nature and not as restrictive.

5 **Brief Description of the Drawings**

FIGURES 1A and 1B are block diagrams showing a system for determining a reference baseline of individual patient status for use in an automated collection and analysis patient care system in accordance with the present invention;

10 FIGURE 2 is a block diagram showing the hardware components of the server system of the system of FIGURE 1A;

FIGURE 3 is a block diagram showing the software modules of the server system of the system of FIGURE 1A;

15 FIGURE 4 is a block diagram showing the processing module of the server system of FIGURE 1A;

FIGURE 5 is a database schema showing, by way of example, the organization of a reference baseline record for cardiac patient care stored as part of a patient care record in the database of the system of FIGURE 1A;

20 FIGURE 6 is a database schema showing, by way of example, the organization of a reference baseline quality of life record for cardiac patient care stored as part of a patient care record in the database of the system of FIGURE 1A;

25 FIGURE 7 is a database schema showing, by way of example, the organization of a monitoring record for cardiac patient care stored as part of a patient care record in the database of the system of FIGURE 1A;

FIGURES 8A-8C are flow diagrams showing a method for determining a reference baseline for use in monitoring a patient status in an automated collection and analysis patient care system in accordance with the present invention; and

30 FIGURE 9 is a flow diagram showing the routine for processing a reference baseline for use in the method of FIGURES 8A-8C;

FIGURE 10 is a flow diagram showing the routine for processing quality of life measures for use in the method of FIGURES 8A-8C; and

FIGURE 11 is a flow diagram showing the routine for reassessing a new reference baseline for use in the method of FIGURES 8A-8C;

5 FIGURES 12A and 12B are block diagrams showing system for determining a reference baseline of individual patient status for use in an automated collection and analysis patient care system in accordance with a further embodiment of the present invention;

FIGURE 13 is a block diagram showing the analysis module of the server
10 system of FIGURES 12A and 12B;

FIGURE 14 is a database schema showing, by way of example, the organization of a quality of life and symptom measures set record for care of patients stored as part of a patient care record in the database of the system of FIGURES 12A and 12B;

15 FIGURE 15 is a record view showing, by way of example, a set of partial cardiac patient care records stored in the database of the system of FIGURES 12A and 12B;

FIGURE 16 is a Venn diagram showing, by way of example, peer group overlap between the partial patient care records of FIGURE 15; and

20 FIGURES 17A-17D are flow diagrams showing a method for determining a reference baseline of individual patient status for use in an automated collection and analysis patient care system in accordance with a further embodiment of the present invention.

Detailed Description

25 FIGURE 1A is a block diagram showing a system 10 for determining a reference baseline 5 of patient status for an individual patient 11 for use in an automated collection and analysis patient care system in accordance with the present invention. An automated collection and analysis patient care system suitable for use with the present invention is disclosed in the related, commonly-
30 owned U.S. Patent application, Serial No. 09/324,894, pending, filed June 3,

1999, the disclosure of which is incorporated herein by reference. A patient 11 is a recipient of an implantable medical device 12, such as, by way of example, an IPG or a heart failure or event monitor, with a set of leads extending into his or her heart. Alternatively, subcutaneous monitors or devices inserted into other
5 organs (not shown) without leads could also be used. The implantable medical device 12 includes circuitry for recording into a short-term, volatile memory telemetered signals, which are stored as a set of collected measures for later retrieval.

For an exemplary cardiac implantable medical device, the telemetered
10 signals non-exclusively present patient information recorded on a per heartbeat, binned average or derived basis and relating to: atrial electrical activity, ventricular electrical activity, minute ventilation, patient activity score, cardiac output score, mixed venous oxygenation score, cardiovascular pressure measures, time of day, the number and types of interventions made, and the relative success
15 of any interventions, plus the status of the batteries and programmed settings. Examples of pacemakers suitable for use in the present invention include the Discovery line of pacemakers, manufactured by Guidant Corporation, Indianapolis, IN. Examples of ICDs suitable for use in the present invention include the Gem line of ICDs, manufactured by Medtronic Corporation,
20 Minneapolis, MN.

In the described embodiment, the patient 11 has a cardiac implantable medical device. However, a wide range of related implantable medical devices are used in other areas of medicine and a growing number of these devices are also capable of measuring and recording patient information for later retrieval.
25 These implantable medical devices include monitoring and therapeutic devices for use in metabolism, endocrinology, hematology, neurology, muscular disorders, gastroenterology, urology, ophthalmology, otolaryngology, orthopedics, and similar medical subspecialties. One skilled in the art would readily recognize the applicability of the present invention to these related implantable medical devices.

The telemetered signals stored in the implantable medical device 12 are retrieved upon completion of an initial observation period and subsequently retrieved on a continuous, periodic basis. By way of example, a programmer 14 can be used to retrieve the telemetered signals. However, any form of
5 programmer, interrogator, recorder, monitor, or telemetered signals transceiver suitable for communicating with an implantable medical device 12 could be used, as is known in the art. In addition, a personal computer or digital data processor could be interfaced to the implantable medical device 12, either directly or via a telemetered signals transceiver configured to communicate with the implantable
10 medical device 12.

Using the programmer 14, a magnetized reed switch (not shown) within the implantable medical device 12 closes in response to the placement of a wand 14 over the location of the implantable medical device 12. The programmer 14 communicates with the implantable medical device 12 via RF signals exchanged
15 through the wand 14. Programming or interrogating instructions are sent to the implantable medical device 12 and the stored telemetered signals are downloaded into the programmer 14. Once downloaded, the telemetered signals are sent via an internetwork 15, such as the Internet, to a server system 16 which periodically receives and stores the telemetered signals in a database 17, as further described
20 below with reference to FIGURE 2.

An example of a programmer 14 suitable for use in the present invention is the Model 2901 Programmer Recorder Monitor, manufactured by Guidant Corporation, Indianapolis, IN, which includes the capability to store retrieved telemetered signals on a proprietary removable floppy diskette. The telemetered
25 signals could later be electronically transferred using a personal computer or similar processing device to the internetwork 15, as is known in the art.

Other alternate telemetered signals transfer means could also be employed. For instance, the stored telemetered signals could be retrieved from the implantable medical device 12 and electronically transferred to the internetwork
30 15 using the combination of a remote external programmer and analyzer and a

remote telephonic communicator, such as described in U.S. Patent No. 5,113,869, the disclosure of which is incorporated herein by reference. Similarly, the stored telemetered signals could be retrieved and remotely downloaded to the server system 16 using a world-wide patient location and data telemetry system, such as
5 described in U.S. Patent No. 5,752,976, the disclosure of which is incorporated herein by reference.

The initial set of telemetered signals recorded during the initial observation period is processed by the server system 16 into a set of reference measures and stored as a reference baseline 5 in the database 17, as further
10 described below with reference to FIGURE 3. The purpose of the observation period is to establish a reference baseline 5 containing a set of reference measures that can include both measured and derived patient information. The reference baseline 5 can link "hard" machine-recorded data with "soft" patient-provided self-assessment data from which can be generated a wellness status indicator. In
15 addition, the reference baseline 5 can be used to identify patients for whom remote patient care may be inappropriate and for patient wellness comparison and analysis during subsequent, on-going remote patient care. The reference baseline 5 is maintained in the database 17 and can be reassessed as needed or on a periodic basis.

20 Subsequent to the initial observation period, the patient is remotely monitored by the server system 16 through the periodic receipt of telemetered signals from the implantable medical device 12 via the internetwork 15. Feedback is then provided back to the patient 11 through a variety of means. By way of example, the feedback can be sent as an electronic mail message generated
25 automatically by the server system 16 for transmission over the internetwork 15. The electronic mail message is received by personal computer 18 (PC) situated for local access by the patient 11. Alternatively, the feedback can be sent through a telephone interface device 19 as an automated voice mail message to a telephone 21 or as an automated facsimile message to a facsimile machine 22,
30 both also situated for local access by the patient 11. In addition to a personal

computer 18, telephone 21, and facsimile machine 22, feedback could be sent to other related devices, including a network computer, wireless computer, personal data assistant, television, or digital data processor.

FIGURE 1B is a block diagram showing a further embodiment of the present invention in which the patient 11 is monitored by the implantable medical device 12 while engaged in performing a prescribed set of timed physical stressors during an initial observation period or during a subsequent observation period if the patient 11 is being reassessed. The stressors are a set of normal, patient activities and cardiovascular and respiratory maneuvers that allow consistent, reproducible physiological functions to be measured by the implantable medical device 12. These maneuvers include activities such as a change in posture, simple physical exercises, breathing state, including holding breath and hyperventilating, and oxygen challenges. By way of example, the stressors include timed physical activities such as running in place 6, recumbency 7, standing 8, sitting motionless 9, and reprogramming at least one of pacing interventions and pacing modes of the implantable medical device 12, as further described below with reference to FIGURE 5.

In a still further embodiment of the present invention, at least one of pacing interventions and pacing modes of the implantable medical device 12 is reprogrammed by the programmer 14 during the initial observation period or during a subsequent observation period if the patient 11 is being reassessed. The patient 11 is then monitored by the reprogrammed implantable medical device 12.

FIGURE 2 is a block diagram showing the hardware components of the server system 16 of the system 10 of FIGURE 1A. The server system 16 consists of three individual servers: network server 31, database server 34, and application server 35. These servers are interconnected via an intranetwork 33. In the described embodiment, the functionality of the server system 16 is distributed among these three servers for efficiency and processing speed, although the functionality could also be performed by a single server or cluster of servers. The network server 31 is the primary interface of the server system 16 onto the

internetwork 15. The network server 31 periodically receives the collected telemetered signals sent by remote implantable medical devices over the internetwork 15. The network server 31 is interfaced to the internetwork 15 through a router 32. To ensure reliable data exchange, the network server 31
5 implements a TCP/IP protocol stack, although other forms of network protocol stacks are suitable.

The database server 34 organizes the patient care records in the database 17 and provides storage of and access to information held in those records. A high volume of data in the form of collected device measures sets from individual
10 patients is received. The database server 34 frees the network server 31 from having to categorize and store the individual collected device measures sets in the appropriate patient care record.

The application server 35 operates management applications, assimilates the reference measures into the reference baseline 5 (shown in FIGURE 1A), and
15 performs data analysis of the patient care records, as further described below with reference to FIGURE 3. The application server 35 communicates feedback to the individual patients either through electronic mail sent back over the internetwork 15 via the network server 31 or as automated voice mail or facsimile messages through the telephone interface device 19.

20 The server system 16 also includes a plurality of individual workstations 36 (WS) interconnected to the intranetwork 33, some of which can include peripheral devices, such as a printer 37. The workstations 36 are for use by the data management and programming staff, nursing staff, office staff, and other consultants and authorized personnel.

25 The database 17 consists of a high-capacity storage medium configured to store individual patient care records and related health care information. Preferably, the database 17 is configured as a set of high-speed, high capacity hard drives, such as organized into a Redundant Array of Inexpensive Disks (RAID) volume. However, any form of volatile storage, non-volatile storage,
30 removable storage, fixed storage, random access storage, sequential access

storage, permanent storage, erasable storage, and the like would be equally suitable. The organization of the database 17 is further described below with reference to FIGURES 5-7.

5 The individual servers and workstations are general purpose, programmed digital computing devices consisting of a central processing unit (CPU), random access memory (RAM), non-volatile secondary storage, such as a hard drive or CD ROM drive, network interfaces, and peripheral devices, including user interfacing means, such as a keyboard and display. Program code, including software programs, and data are loaded into the RAM for execution and
10 processing by the CPU and results are generated for display, output, transmittal, or storage. In the described embodiment, the individual servers are Intel Pentium-based server systems, such as available from Dell Computers, Austin, Texas, or Compaq Computers, Houston, Texas. Each system is preferably equipped with 128MB RAM, 100GB hard drive capacity, data backup facilities, and related
15 hardware for interconnection to the intranetwork 33 and internetwork 15. In addition, the workstations 36 are also Intel Pentium-based personal computer or workstation systems, also available from Dell Computers, Austin, Texas, or Compaq Computers, Houston, Texas. Each workstation is preferably equipped with 64MB RAM, 10GB hard drive capacity, and related hardware for
20 interconnection to the intranetwork 33. Other types of server and workstation systems, including personal computers, minicomputers, mainframe computers, supercomputers, parallel computers, workstations, digital data processors and the like would be equally suitable, as is known in the art.

The telemetered signals are communicated over an internetwork 15, such
25 as the Internet. However, any type of electronic communications link could be used, including an intranetwork link, serial link, data telephone link, satellite link, radio-frequency link, infrared link, fiber optic link, coaxial cable link, television link, and the like, as is known in the art. Also, the network server 31 is interfaced to the internetwork 15 using a T-1 network router 32, such as manufactured by
30 Cisco Systems, Inc., San Jose, California. However, any type of interfacing

device suitable for interconnecting a server to a network could be used, including a data modem, cable modem, network interface, serial connection, data port, hub, frame relay, digital PBX, and the like, as is known in the art.

FIGURE 3 is a block diagram showing the software modules of the server system 16 of the system 10 of FIGURE 1A. Each module is a computer program written as source code in a conventional programming language, such as the C or Java programming languages, and is presented for execution by the CPU as object or byte code, as is known in the art. The various implementations of the source code and object and byte codes can be held on a computer-readable storage medium or embodied on a transmission medium in a carrier wave.

There are three basic software modules, which functionally define the primary operations performed by the server system 16: database module 51, analysis module 53, and processing module 56. In the described embodiment, these modules are executed in a distributed computing environment, although a single server or a cluster of servers could also perform the functionality of these modules. The module functions are further described below beginning with reference to FIGURES 8A-8C.

A reference baseline 5 is established at the outset of providing a patient with remote patient care. The server system 16 periodically receives an initially collected device measures set 57. This set represents patient information which was collected from the implantable medical device 12 (shown in FIGURE 1A) during the initial observation period, as further discussed below with reference to FIGURE 5. In addition, the server system 16 can also periodically receive quality of life measures sets 60 recorded by the patient 11, as further described below with reference to FIGURE 6. Both the initially collected device measures set 57 and quality of life measures set 60 are forwarded to the database module 51 for storage in the patient's patient care record in the database 52. During subsequent, on-going monitoring for remote patient care, the server system 16 periodically receives subsequently collected device measures sets 58, which are also forwarded to the database module 51 for storage.

The database module 51 organizes the individual patient care records stored in the database 52 and provides the facilities for efficiently storing and accessing the collected device measures sets 57, 58 and patient data maintained in those records. Exemplary database schemes for use in storing the initially
5 collected device measures set 57, quality of life measures set 60, and subsequently collected device measures sets 58 in a patient care record are described below, by way of example, with reference to FIGURES 5-7. The database server 34 (shown in FIGURE 2) performs the functionality of the database module 51. Any type of
10 database organization could be utilized, including a flat file system, hierarchical database, relational database, or distributed database, such as provided by database vendors, such as Oracle Corporation, Redwood Shores, California.

The processing module 56 processes the initially collected device measures set 57 and, if available, the quality of life measures set 60, stored in the patient care records in the database 52 into the reference baseline 5. The
15 reference baseline 5 includes a set of reference measures 59 which can be either directly measured or indirectly derived patient information. The reference baseline 5 can be used to identify patients for whom remote patient care might be inappropriate and to monitor patient wellness in a continuous, on-going basis.

On a periodic basis or as needed, the processing module 56 reassesses the
20 reference baseline 5. Subsequently collected device measures sets 58 are received from the implantable medical device 12 (shown in FIGURE 1A) subsequent to the initial observation period. The processing module 56 reassimilates these additional collected device measures sets into a new reference baseline. The operations performed by the processing module 56 are further described below
25 with reference to FIGURE 4. The application server 35 (shown in FIGURE 2) performs the functionality of the processing module 56.

The analysis module 53 analyzes the subsequently collected device measures sets 58 stored in the patient care records in the database 52. The analysis module 53 monitors patient wellness and makes an automated
30 determination in the form of a patient status indicator 54. Subsequently collected

device measures sets 58 are periodically received from implantable medical devices and maintained by the database module 51 in the database 52. Through the use of this collected information, the analysis module 53 can continuously follow the medical well being of a patient and can recognize any trends in the collected information that might warrant medical intervention. The analysis module 53 compares individual measures and derived measures obtained from both the care records for the individual patient and the care records for a disease specific group of patients or the patient population in general. The analytic operations performed by the analysis module 53 are further described below with reference to FIGURE 4. The application server 35 (shown in FIGURE 2) performs the functionality of the analysis module 53.

The feedback module 55 provides automated feedback to the individual patient based, in part, on the patient status indicator 54. As described above, the feedback could be by electronic mail or by automated voice mail or facsimile. Preferably, the feedback is provided in a tiered manner. In the described embodiment, four levels of automated feedback are provided. At a first level, an interpretation of the patient status indicator 54 is provided. At a second level, a notification of potential medical concern based on the patient status indicator 54 is provided. This feedback level could also be coupled with human contact by specially trained technicians or medical personnel. At a third level, the notification of potential medical concern is forwarded to medical practitioners located in the patient's geographic area. Finally, at a fourth level, a set of reprogramming instructions based on the patient status indicator 54 could be transmitted directly to the implantable medical device to modify the programming instructions contained therein. As is customary in the medical arts, the basic tiered feedback scheme would be modified in the event of bona fide medical emergency. The application server 35 (shown in FIGURE 2) performs the functionality of the feedback module 55.

FIGURE 4 is a block diagram showing the processing module 56 of the server system 16 of FIGURE 1A. The processing module 53 contains two

functional submodules: evaluation module 70 and acceptance module 71. The purpose of the evaluation module 70 is to process the initially collected device measures set 57 by determining any derived measures and calculating appropriate statistical values, including means and standard deviations, for the reference measures set 59 in the reference baseline 5. The purpose of the acceptance module 71 is to analyze the reference measures set 59 against the acceptance parameters set 72. A patient care record storing a reference measures set 59 substantially out of conformity with the acceptance parameters set 72 could be indicative of a patient for whom remote patient care is inappropriate. Consequently, the acceptance module 71 identifies each patient care record storing at least one reference measure which is substantially non-conforming to a corresponding parameter in the acceptance parameters set 72.

For instance, an acceptance parameter for heart rate might be specified as a mean heart rate within a range of 40-90 beats per minute (bpm) over a 24-hour period. However, a patient care record storing a reference measure falling either substantially above or below this acceptance parameter, for example, in excess of 90 bpm, would be considered substantially non-conforming. The acceptance parameters set 72 are further described below with reference to FIGURE 5.

The evaluation module 70 also determines new reference baselines 73 when necessary. For instance, the new reference baseline 73 might be reassessed on an annual or quarterly basis, as the needs of the patient 11 dictate. Similarly, the new reference baseline 73 might be reassessed for a patient whose patient care record stores a subsequently collected device measures set 58 substantially out of conformity with the reference measures set 59 in the original reference baseline 5. The new reference baseline 73 would be assessed by the processing module 56 using subsequently collected device measures sets 58 during a subsequent observation period.

FIGURE 5 is a database schema showing, by way of example, the organization of a reference baseline record 75 for cardiac patient care stored as part of a patient care record in the database 17 of the system 10 of FIGURE 1A.

The reference baseline record 75 corresponds to the reference baseline 5, although only the information pertaining to the set of reference measures in the reference baseline 5 are shown. Each patient care record would also contain normal identifying and treatment profile information, as well as medical history and other pertinent data (not shown). For instance, during the initial observation period, the patient 11 maintains a diary of activities, including the onset of bedtime and waking time, plus the time and dosing of any medications, including non-prescription drugs. The observation period can be expanded to include additional information about the normal range of patient activities as necessary, including a range of potential anticipated activities as well as expected travel times and periods away from home. In addition, information from any set of medical records could be included in the patient care record. The diary, medication, activity, and medical record information and medical test information (e.g., electrocardiogram, echocardiogram, and/or coronary angiogram) is incorporated into the patient care record and is updated with continuing patient information, such as changes in medication, as is customary in the art.

The reference measures set 59 stored in the reference baseline record 75 are processed from the initial collected device measures set 57 (shown in FIGURE 3), as further described below with reference to FIGURE 9. The implantable medical device 12 (shown in FIGURE 1A) records the initial collected device measures set 57 during the initial observation period. For example, for a cardiac patient, the reference baseline record 75 stores the following information as part of the reference measures set 59: patient activity score 76, posture 77 (e.g., from barometric pressure), atrial electrical activity 78 (e.g., atrial rate), ventricular electrical activity 79 (e.g., ventricular rate), cardiovascular pressures 80, cardiac output 81, oxygenation score 82 (e.g., mixed venous oxygenation), pulmonary measures 83 (e.g., transthoracic impedance, measures of lung wetness, and/or minute ventilation), body temperature 84, PR interval 85 (or AV interval), QRS measures 86 (e.g., width, amplitude, frequency content, and/or morphology), QT interval 87, ST-T wave measures 88 (e.g., T

wave alternans or ST segment depression or elevation), potassium [K+] level 89,
 sodium [Na+] level 90, glucose level 91, blood urea nitrogen and creatinine 92,
 acidity (pH) level 93, hematocrit 94, hormonal levels 95 (e.g., insulin,
 epinephrine), cardiac injury chemical tests 96 (e.g., troponin, myocardial band
 5 creatinine kinase), myocardial blood flow 97, central nervous system injury
 chemical tests 98 (e.g., cerebral band creatinine kinase), central nervous system
 (CNS) blood flow 99, and time of day 100. Other types of reference measures are
 possible. In addition, a well-documented set of derived measures can be
 determined based on the reference measures, as is known in the art.

10 In the described embodiment, the initial and any subsequent observation
 periods last for about one 7-day period during which time the patient 11 might be
 asked to perform, if possible, repeated physical stressors representative of both
 relatively normal activity and/or activities designed to test the response of the
 body to modest activity and physiologic perturbations for use as the baseline
 15 "reference" measures that might be recorded daily for a period of one week prior
 to initiating fee-for-service monitoring. Reference measures taken and derived
 from the observation period are recorded, processed, and stored by the system 10.
 The reference measures include both measured and derived measures, including
 patient activity score 76, posture 77, atrial electrical activity 78, ventricular
 20 electrical activity 79, cardiovascular pressures 80, cardiac output 81, oxygenation
 score 82, pulmonary measures 83, body temperature 84, PR interval 85 (or AV
 interval), QRS measures 86, QT interval 87, ST-T wave measures 88, potassium
 [K+] level 89, sodium [Na+] level 90, glucose level 91, blood urea nitrogen and
 creatinine 92, acidity (pH) level 93, hematocrit 94, hormonal levels 95, cardiac
 25 injury chemical tests 96, myocardial blood flow 97, central nervous system injury
 chemical tests 98, central nervous system (CNS) blood flow 99, and time of day
 100. Other combination and derivative measures can also be determined, as
 known in the art.

An illustrative prescribed set of timed physical stressors for a non-
 30 ambulatory patient 11 is as follows:

- (1) Running in place 6: if possible, the patient 11 must run in place for about five minutes;
- (2) Walking (not shown): if possible, the patient 11 must walk for about six minutes and the total distance walked is measured;
- 5 (3) Ascending stairs (not shown): if possible, the patient 11 must ascend two flights of stairs;
- (4) Recumbency 7: if possible, the patient 11 must recline following about two minutes of motionless immobile upright posture. Upon recumbency, the patient 11 must remain as immobile as possible
- 10 (5) Standing 8: if possible, the patient 11 must briskly assume an upright standing posture after the ten-minute recumbency 7 and must remain standing without activity for about five minutes;
- (6) Coughing (not shown): if possible, the patient 11 must cough
- 15 (7) forcefully about three times when in an upright position to record the cardiovascular pressures 80;
- (7) Hyperventilation (not shown): if possible, the patient 11 must hyperventilate over thirty seconds with full deep and rapid breaths to record ventilatory status;
- 20 (8) Sitting motionless 9: when a physician is complicit, the patient 11 must, if possible, use an approximately 2.0 liter per minute nasal cannula while transmitting data for about twenty minutes while sitting to evaluate cardiopulmonary response;
- (9) Program AAI and VVI temporary pacing interventions for five
- 25 (10) minutes, at low and high rates, if applicable (e.g., 40 bpm and 120 bpm) to evaluate cardiopulmonary response; and
- (10) Test dual site or biventricular pacing modes, if applicable, for approximately 20 minutes to evaluate cardiopulmonary response.

These physical and pacing stimulus stressors must be annotated with date
30 and time of day 100 and correlated with symptoms and the quality of life

measures 110. Heart rate, temperature, and time of day are directly measured while the patient activity score and cardiac output score are derived. These physical stressors are merely illustrative in nature and the set of physical and pacing stimulus stressors actually performed by any given patient would necessarily depend upon their age and physical condition as well as device implanted. Also, during the observation period, the temperature is monitored with QT interval shortening and, if the patient is in atrial fibrillation, the patient must undergo an incremental ventricular pacing protocol to assess his or her response to rate stabilization. Finally, a T-wave alternans measurement (not shown) can be integrated into the reference baseline 5 during rest and sinus rhythm activities.

In a further embodiment of the present invention, the reference measures set 59 in the reference baseline 5 are reassessed on an annual or, if necessary, quarterly, basis. In addition, if the reference measures set 59 was recorded during a period when the patient 11 was unstable or recovering from a recent illness, the reference baseline 5 is reassessed when the patient 11 is again stable, as further described below with reference to FIGURE 11.

As further described below with reference to FIGURE 9, the reference measures are analyzed against the acceptance parameters set 72. The acceptance parameters are those indicator values consistent with the presence of some form of chronic yet stable disease which does not require immediate emergency care. In the described embodiment, the acceptance parameters set 72 for the reference measures 59 in the reference baseline record 75 are, by way of example, as follows: cardiac output 81 falling below 2.5 liters/minute/m²; heart rate below 40 bpm or above 120 bpm; body temperature 84 over 101° F and below 97° F; patient activity 76 score of 1.0 or below; oxygenation score 82 of less than 60% mixed venous saturation at rest; pulmonary artery diastolic pressure greater than 20 mm Hg at rest; and minute ventilation less than 10.0 liters/minute at rest.

FIGURE 6 is a database schema showing, by way of example, the organization of a reference baseline quality of life record 110 for cardiac patient

care stored as part of a patient care record in the database 17 of the system 10 of
FIGURE 1A. A quality of life score is a semi-quantitative self-assessment of an
individual patient's physical and emotional well being. Non-commercial, non-
proprietary standardized automated quality of life scoring systems are readily
5 available, such as provided by the Duke Activities Status Indicator. These scoring
systems can be provided for use by the patient 11 on the personal computer 18
(shown in FIGURE 1A) and the patient 11 can then record his or her quality of
life scores for periodic download to the server system 16.

For example, for a cardiac patient, the reference baseline quality of life
10 record 110 stores the following information as part of the reference measures set
59: health wellness 111, shortness of breath 112, energy level 113, exercise
tolerance 114, chest discomfort 115, time of day 116, and other quality of life
measures as would be known to one skilled in the art. Using the quality of life
scores 111-116 in the reference baseline quality of life record 110, the patient 11
15 can be notified automatically when variable physiological changes matches his or
her symptomatology.

A quality of life indicator is a vehicle through which a patient can
remotely communicate to the patient care system how he or she is subjectively
feeling. When tied to machine-recorded physiological measures, a quality of life
20 indicator can provide valuable additional information to medical practitioners and
the automated collection and analysis patient care system 10 not otherwise
discernible without having the patient physically present. For instance, a scoring
system using a scale of 1.0 to 10.0 could be used with 10.0 indicating normal
wellness and 1.0 indicating severe health problems. Upon the completion of the
25 initial observation period, a patient might indicate a health wellness score 111 of
5.0 and a cardiac output score of 5.0. After one month of remote patient care, the
patient might then indicate a health wellness score 111 of 4.0 and a cardiac output
score of 4.0 and a week later indicate a health wellness score 111 of 3.5 and a
cardiac output score of 3.5. Based on a comparison of the health wellness scores
30 111 and the cardiac output scores, the system 10 would identify a trend indicating

the necessity of potential medical intervention while a comparison of the cardiac output scores alone might not lead to the same prognosis.

FIGURE 7 is a database schema showing, by way of example, the organization of a monitoring record 120 for cardiac patient care stored as part of a patient care record in the database 17 of the system 10 of FIGURE 1A. Each patient care record stores a multitude of subsequently collected device measures sets 58 (shown in FIGURE 3) for each individual patient 11. Each set represents a recorded snapshot of telemetered signals data which were recorded, for instance, on a per heartbeat or binned average basis by the implantable medical device 12. For example, for a cardiac patient, the following information would be recorded as a subsequently collected device measures set 58: atrial electrical activity 121, ventricular electrical activity 122, minute ventilation 123, patient activity score 124, cardiac output score 125, mixed venous oxygen score 126, pulmonary artery diastolic pressure measure 127, time of day 128, interventions made by the implantable medical device 129, and the relative success of any interventions made 130. In addition, the implantable medical device 12 would also communicate device specific information, including battery status and program settings 131. Other types of collected or combined measures are possible as previously described. In addition, a well-documented set of derived measures can be determined based on the collected measures, as is known in the art.

FIGURES 8A-8C are flow diagrams showing a method 140 for determining a reference baseline 5 for use in monitoring a patient status in an automated collection and analysis patient care system 10 in accordance with the present invention. The method 140 operates in two phases: collection and processing of an initial reference baseline 5 (blocks 141-149) and monitoring using the reference baseline 5 (blocks 150-158). The method 140 is implemented as a conventional computer program for execution by the server system 16 (shown in FIGURE 1A). As a preparatory step, the patient care records are organized in the database 17 with a unique patient care record assigned to each individual patient (block 141).

The collection and processing of the initial reference baseline 5 begins with the patient 11 being monitored by the implantable medical device 12 (shown in FIGURE 1A). The implantable medical device 12 records the initially collected device measures set 57 during the initial observation period (block 142),
5 as described above with reference to FIGURE 5. Alternatively, the patient 11 could be engaged in performing the prescribed set of timed physical stressors during the initial observation period, as described above with reference to FIGURE 1B. As well, the implantable medical device 12 could be reprogrammed by the programmer 14 during the initial observation period, also as described
10 above with reference to FIGURE 1B. The initially collected device measures set 57 is retrieved from the implantable medical device 12 (block 143) using a programmer, interrogator, telemetered signals transceiver, and the like. The retrieved initially collected device measures sets are sent over the internetwork 15 or similar communications link (block 144) and periodically received by the server system 16 (block 145). The initially collected device measures set 57 is stored into a patient care record in the database 17 for the individual patient 11 (block 146). The initially collected device measures set 57 is processed into the reference baseline 5 (block 147) which stores a reference measures set 59, as further described below with reference to FIGURE 9.

20 If quality of life measures are included as part of the reference baseline 5 (block 148), the set of quality of life measures are processed (block 149), as further described below with reference to FIGURE 10. Otherwise, the processing of quality of life measures is skipped (block 148).

Monitoring using the reference baseline 5 begins with the retrieval of the
25 subsequently collected device measures sets 58 from the implantable medical device 12 (block 150) using a programmer, interrogator, telemetered signals transceiver, and the like. The subsequently collected device measures sets 58 are sent, on a substantially regular basis, over the internetwork 15 or similar communications link (block 151) and periodically received by the server system
30 16 (block 152). The subsequently collected device measures sets 58 are stored

into the patient care record in the database 17 for that individual patient (block 153).

The subsequently collected device measures sets 58 are compared to the reference measures in the reference baseline 5 (block 154). If the subsequently collected device measures sets 58 are substantially non-conforming (block 155), the patient care record is identified (block 156). Otherwise, monitoring continues as before.

In the described embodiment, substantial non-conformity refers to a significant departure from a set of parameters defining ranges of relative normal activity and normal exercise responses for that patient. Relative normal activity is defined as follows. Note the "test exercise period" refers to running in place, walking, and ascending stairs physical stressors described above:

- (1) Heart rate stays within a range of 40-90 bpm without upward or downward change in mean heart rate ± 1.0 standard deviation (SD) over a 24 hour period;
- (2) Wake patient activity score during awake hours stays within a range of ± 1.0 SD without change in the mean activity score over a 24 hour period with no score equal to the minimum activity score noted during sleep;
- (3) Sleep period activity score stays within a range of ± 1.0 SD of typical sleep scores for that patient for the six to ten hour period of sleep with no score less than the minimum score observed during normal awake behavior during the initial observation period or during normal sleep;
- (4) Minute ventilation 123 during normal awake hours stays within a range of ± 1.0 SD without change in the mean score over a 24 hour period with no score equal to the minimum or maximum minute ventilation 123 noted during the test exercise period or the minimum or maximum minute ventilation 123 noted during the initial observation period;

- 5
- (5) Cardiac output score 125 during normal awake hours stays within a range of ± 1.0 SD without change in the mean cardiac output score over a 24 hour period with no score equal to the minimum cardiac output score noted during the test exercise period or the minimum cardiac output score noted during the initial observation period;
- 10
- (6) Mixed venous oxygenation score 126 during normal awake hours stays within a range of ± 1.0 SD without change in the mean mixed venous oxygenation score over a 24 hour period with no score equal to the minimum mixed venous oxygenation score noted during the test exercise period or the minimum mixed venous oxygenation score noted during the initial observation period;
- 15
- (7) Pulmonary artery diastolic pressure measure 127 during normal awake hours stays within a range of ± 1.0 SD without change in the mean pulmonary artery diastolic pressure measure 127 over a 24 hour period with no score equal to the minimum or maximum pulmonary artery diastolic pressure measure 127 noted during the test exercise period or during the initial observation period;
- 20
- (8) Potassium levels [K+] score during normal awake hours stays within a range of ± 1.0 SD without change in the mean K+ levels over a 24 hour period with no score less than 3.5 meq/liter or greater than 5.0 meq/liter noted during the test exercise period or during the initial observation period;
- 25
- (9) Sodium levels [Na+] score during normal awake hours stays within a range of ± 1.0 SD without change in the mean Na+ levels over a 24 hour period with no score less than 135 meq/liter or greater than 145 meq/liter during the test exercise period or during the initial observation period;
- 30
- (10) Acidity (pH) score during normal awake hours stays within a range of ± 1.0 SD without change in the mean pH score over a 24 hour period with no score equal to the minimum or maximum pH score

noted during the test exercise period or the minimum or maximum pH scores noted during the initial observation period;

5 (11) Glucose levels during normal awake hours stays within a range of ± 1.0 SD without change in the mean glucose levels over a 24 hour period with no score less than 60 mg/dl or greater than 200 mg/dl during the test exercise period or during the initial observation period;

10 (12) Blood urea nitrogen (BUN) or creatinine (Cr) levels during normal awake hours stays within a range of ± 1.0 SD without change in the mean BUN or Cr levels score over a 24 hour period with no score equal to the maximum BUN or creatinine levels noted during the test exercise period or the maximum BUN or Cr levels noted during the initial observation period;

15 (13) Hematocrit levels during normal awake hours stays within a range of ± 1.0 SD without change in the mean hematocrit levels score over a 24 hour period with no score less than a hematocrit of 30 during the test exercise period or during the initial observation period;

20 (14) Troponin, creatinine kinase myocardial band, or other cardiac marker of myocardial infarction or ischemia, level during normal awake hours stays within a range of ± 1.0 SD without change in the mean troponin level score over a 24 hour period with no score equal to the maximum troponin level score noted during the test exercise period or the maximum troponin level scores noted during the initial observation period;

25 (15) Central nervous system (CNS) creatinine kinase (CK) or equivalent markers of CNS ischemia or infarction levels during normal awake hours stays within a range of ± 1.0 SD without change in the mean CNS CK levels over a 24 hour period with no score equal to the maximum CNS CK levels score noted during the

30

test exercise period or the maximum CNS CK levels scores noted during the initial observation period;

- 5
- (16) Barometric pressure during normal awake hours stays within a range of ± 1.0 SD without change in the mean barometric pressure score over a 24 hour period with no score equal to the minimum or maximum barometric pressure noted during the test exercise period or the minimum or maximum barometric pressure noted during the initial observation period;
- 10
- (17) PR interval (or intrinsic AV interval) of sinus rhythm during normal awake hours stays within a range of ± 1.0 SD without change in the mean PR interval over a 24 hour period with no score equal to the minimum or maximum PR interval noted during the test exercise period or the minimum or maximum PR interval noted during the initial observation period;
- 15
- (18) QT interval during normal awake hours stays within a range of ± 1.0 SD without change in the mean QT interval over a 24 hour period with no score equal to the minimum or maximum QT interval noted during the test exercise period or the minimum or maximum QT interval noted during the initial observation period;
- 20
- (19) QRS duration during normal awake hours stays within a range of ± 1.0 SD without change in the mean QRS duration over a 24 hour period with no score equal to the maximum QRS duration noted during the test exercise period or the maximum QRS duration noted during the initial observation period;
- 25
- (20) ST segment depression or elevation during normal awake hours stays within a range of ± 1.0 SD without change in the mean ST segment depression or elevation over a 24 hour period with no score equal to the maximum ST segment depression or elevation noted during the test exercise period or the maximum ST segment

depression or elevation noted during the initial observation period;
and

- 5 (21) Temperature during normal awake hours stays within a range of \pm
1.0 SD without change in the mean temperature over a 24 hour
period with no score equal to the minimum or maximum
temperature score noted during the test exercise period or the
minimum or maximum temperature noted during the initial
observation period.

10 For an exemplary, non-ambulatory patient with no major impairments of
the major limbs, reference exercise can be defined as follows:

- 15 (1) Heart rate increases by 10 bpm for each one point increase in
activity score. Note that to be considered "normal exercise," heart
rate generally should not increase when the activity score does not
increase at least 1.0 SD above that noted during the twenty-four
hour reference period or greater than that observed during any
reference exercise periods. Heart rate should decrease to the
baseline value over fifteen minutes once activity stops or returns to
the baseline activity level;
- 20 (2) Patient activity score 124 rises at least 1.0 SD over that observed in
the mean activity score over a 24 hour period or greater than that
observed during any reference exercise periods;
- 25 (3) Cardiac output score 125 rises at least 1.0 SD over that observed in
the mean cardiac output score over a 24 hour period or within 0.5
SD of the two minute test exercise period. Cardiac output score
should increase 0.5 liters per minute with each 10 bpm increase in
heart rate period or greater than that observed during any reference
exercise periods;
- 30 (4) In conjunction with an increase in activity score and heart rate,
mixed venous oxygenation score 126 falls at least 1.0 SD below
observed in the mean oxygenation score over a 24 hour period or

be less than any oxygenation score observed during the reference exercise periods. Oxygenation score should decrease 5.0 mm Hg with each 10 bpm increase in heart rate or 1.0 SD increase in cardiac output score during exercise;

- 5 (5) In conjunction with an increase in activity score and heart rate, pulmonary artery diastolic pressure measure 127 rises at least 1.0 SD over that observed in the mean cardiovascular pressure score over a 24 hour period or is greater than that observed during the reference exercise periods;
- 10 (6) In conjunction with an increase in activity score and heart rate, minute ventilation 123 rises at least 1.0 SD over that observed over a 24 hour reference period or greater than that observed during any reference exercise period. Minute ventilation should rise 1.0 liter per minute with each 10 bpm increase in heart rate; and
- 15 (7) In conjunction with an increase in activity score and heart rate, temperature should rise at least 1.0 SD over that observed in the mean temperature over a 24 hour period or greater than that observed during the reference exercise periods. Temperature should rise 0.1° F with each 10 bpm increase in heart rate.

20 Finally, if the time for a periodic reassessment has arrived or the subsequently collected device measures sets 58 are substantially non-conforming (block 157), the reference baseline 5 is reassessed (block 158) and a new reference baseline 73 determined, as further described below with reference to FIGURE 11. Otherwise, the routine returns.

25 In the described embodiment, the reference baseline 5 is preferably reassessed on an annual or, if necessary, quarterly basis. In addition, the reference baseline 5 might be reassessed if physiological findings dictate that new interventions might be indicated or if the patient 11 indicates a change in medications and general health status. Other bases for reassessing the reference

30 baseline 5 are feasible.

FIGURE 9 is a flow diagram showing the routine 147 for processing a reference baseline 5 for use in the method 140 of FIGURES 8A-8C. The purpose of this routine is to analyze the initially collected device measures set 57 and create a reference baseline 5, if possible. First, the acceptance parameters set 72 (shown in FIGURE 3) is defined (block 160) and the reference measures set 59 in the reference baseline 5, including any quality of life measures, are analyzed against the acceptance parameters set (block 161), as described above with reference to FIGURE 5. If the reference measures in the reference baseline 5 are substantially non-conforming to the acceptance parameters set (block 162), the patient care record is identified (block 164). Otherwise, if conforming (block 162), the baseline reference 72 is stored into the patient care record in the database 17 (block 163). The routine then returns.

FIGURE 10 is a flow diagram showing the routine 149 for processing quality of life measures for use in the method 140 of FIGURES 8A-8C. The purpose of this routine is to process and store a collected quality of life measures set 60 into the reference baseline 5. Collected quality of life measures sets 60 are periodically received by the server system 16 over the internetwork 15 or similar communications link (block 170). The quality of life measures were previously recorded by the patient 11 using, for example, the personal computer 18 (shown in FIGURE 1A) and downloaded onto the internetwork 15 or similar communications link. The collected quality of life measures set 60 is stored into a patient care record in the database 17 for the individual patient 11 (block 171). The collected quality of life measures set 60 is then assimilated into the reference baseline 5 (block 172), as further described above with reference to FIGURE 9. The routine then returns.

FIGURE 11 is a flow diagram showing the routine 158 for reassessing a new reference baseline 73 for use in the method 140 of FIGURES 8A-8C. The purpose of this routine is to reassess a new reference baseline 5 periodically or when necessary. Similar to the collection and assimilation of the initial reference baseline 5, the routine begins with the patient 11 being monitored by the

implantable medical device 12 (shown in FIGURE 1A). The implantable medical device 12 records subsequently collected device measures sets 58 throughout a subsequent observation period (block 180), as described above with reference to FIGURE 5. Alternatively, the patient 11 could be engaged in performing the
5 prescribed set of timed physical stressors, as described above with reference to FIGURE 1B. As well, the implantable medical device 12 could be reprogrammed by the programmer 14 during the subsequent observation period, also as described above with reference to FIGURE 1B. The subsequently collected device
10 measures sets 58 are retrieved from the implantable medical device 12 (block 181) using a programmer, interrogator, telemetered signals transceiver, and the like. The retrieved subsequently collected device measures sets are sent over the internetwork 15 or similar communications link (block 182) and periodically received by the server system 16 (block 183). The subsequently collected device
15 measures sets 58 are stored into the patient care record in the database 17 for the individual patient 11 (block 184). Finally, the subsequently collected device measures sets 58 are assimilated into the new reference baseline 73 (block 185), as further described above with reference to FIGURE 9. The routine then returns.

FIGURES 12A and 12B are block diagrams showing system for determining a reference baseline of individual patient status for use in an
20 automated collection and analysis patient care system 200 in accordance with a further embodiment of the present invention. The system 200 provides remote patient care in a manner similar to the system 10 of FIGURES 1A and 1B, but with additional functionality for diagnosing and monitoring multiple sites within a
25 patient's body using a variety of patient sensors for diagnosing one or more disorder. The patient 201 can be the recipient of an implantable medical device 202, as described above, or have an external medical device 203 attached, such as a Holter monitor-like device for monitoring electrocardiograms. In addition, one
30 or more sites in or around the patient's body can be monitored using multiple sensors 204a, 204b, such as described in U.S. Patents 4,987,897; 5,040,536; 5,113,859; and 5,987,352, the disclosures of which are incorporated herein by

reference. One automated system and method for collecting and analyzing retrieved patient information suitable for use with the present invention is described in the related, commonly-owned U.S. Patent application, Serial No. ___, entitled "System And Method For Automated Collection And Analysis Of Regularly Retrieved Patient Information For Remote Patient Care," pending, filed December 31, 1999, the disclosure of which is incorporated herein by reference. Other types of devices with physiological measure sensors, both heterogeneous and homogenous, could be used, either within the same device or working in conjunction with each other, as is known in the art.

10 As part of the system 200, the database 17 stores patient care records 205 for each individual patient to whom remote patient care is being provided. Each patient care record 205 contains normal patient identification and treatment profile information, as well as medical history, medications taken, height and weight, and other pertinent data (not shown). The patient care records 205 consist primarily of monitoring sets 206 storing device and derived measures (D&DM) sets 207 and quality of life and symptom measures (QOLM) sets 208 recorded and determined thereafter on a regular, continuous basis. The organization of the device and derived measures sets 205 for an exemplary cardiac patient care record is described above with reference to FIGURE 5. The organization of the quality of life and symptom measures sets 208 is further described below with reference to FIGURE 14.

25 The patient care records 205 also include a reference baseline 209, similar to the reference baseline 5 described above, which stores an augmented set of device and derived reference measures sets 210 and quality of life and symptom measures sets 211 recorded and determined during the initial observation period. Other forms of database organization are feasible.

30 Finally, simultaneous notifications can also be delivered to the patient's physician, hospital, or emergency medical services provider 209 using feedback means similar to that used to notify the patient. As described above, the feedback could be by electronic mail or by automated voice mail or facsimile. The

feedback can also include normalized voice feedback, such as described in the related, commonly-owned U.S. Patent application, Serial No. ___, entitled "System And Method For Providing Normalized Voice Feedback From An Individual Patient In An Automated Collection And Analysis Patient Care System," pending, filed December 31, 1999, the disclosure of which is
5 incorporated herein by reference.

FIGURE 13 is a block diagram showing the analysis module 53 of the server system 16 of FIGURES 12A and 12B. The peer collected measures sets 60 and sibling collected measures sets 61 can be organized into site specific
10 groupings based on the sensor from which they originate, that is, implantable medical device 202, external medical device 203, or multiple sensors 204a, 204b. The functionality of the analysis module 53 is augmented to iterate through a plurality of site specific measures sets 215 and one or more disorders.

As described above, as an adjunct to remote patient care through the
15 monitoring of measured physiological data via implantable medical device 202, external medical device 203 and multiple sensors 204a, 204b, quality of life and symptom measures sets 208 can also be stored in the database 17 as part of the monitoring sets 206. A quality of life measure is a semi-quantitative self-assessment of an individual patient's physical and emotional well-being and a
20 record of symptoms, such as provided by the Duke Activities Status Indicator. These scoring systems can be provided for use by the patient 11 on the personal computer 18 (shown in FIGURE 1) to record his or her quality of life scores for both initial and periodic download to the server system 16.

FIGURE 14 is a database schema which augments the database schema
25 described above with reference to FIGURE 6 and showing, by way of example, the organization of a quality of life and symptom measures set record 220 for care of patients stored as part of a patient care record 205 in the database 17 of the system 200 of FIGURES 12A and 12B. The following exemplary information is recorded for a patient: overall health wellness 221, psychological state 222, chest
30 discomfort 223, location of chest discomfort 224, palpitations 225, shortness of

breath 226, exercise tolerance 227, cough 228, sputum production 229, sputum color 230, energy level 231, syncope 232, near syncope 233, nausea 234, diaphoresis 235, time of day 91, and other quality of life and symptom measures as would be known to one skilled in the art.

5 Other types of quality of life and symptom measures are possible, such as those indicated by responses to the Minnesota Living with Heart Failure Questionnaire described in E. Braunwald, ed., "Heart Disease—A Textbook of Cardiovascular Medicine," pp. 452-454, W.B. Saunders Co. (1997), the disclosure
10 based on the relationship between symptoms and the amount of effort required to provoke them can serve as quality of life and symptom measures, such as the New York Heart Association (NYHA) classifications I, II, III and IV, also described in *Ibid.*

The patient may also add non-device quantitative measures, such as the
15 six-minute walk distance, as complementary data to the device and derived measures sets 207 and the symptoms during the six-minute walk to quality of life and symptom measures sets 208.

FIGURE 15 is a record view showing, by way of example, a set of partial cardiac patient care records stored in the database 17 of the system 200 of
20 FIGURES 12A and 12B. Three patient care records are again shown for *Patient 1*, *Patient 2*, and *Patient 3* with each of these records containing site specific measures sets 215, grouped as follows. First, the patient care record for *Patient 1* includes three site specific measures sets *A*, *B* and *C*, corresponding to three sites on *Patient 1*'s body. Similarly, the patient care record for *Patient 2* includes two
25 site specific measures sets *A* and *B*, corresponding to two sites, both of which are in the same relative positions on *Patient 2*'s body as the sites for *Patient 1*. Finally, the patient care record for *Patient 3* includes two site specific measures sets *A* and *D*, also corresponding to two medical device sensors, only one of which, Site *A*, is in the same relative position as Site *A* for *Patient 1* and *Patient 2*.

- The analysis module 53 (shown in FIGURE 13) performs two further forms of comparison in addition to comparing the individual measures for a given patient to other individual measures for that same patient or to other individual measures for a group of other patients sharing the same disease-specific characteristics or to the patient population in general. First, the individual measures corresponding to each body site for an individual patient can be compared to other individual measures for that same patient, a peer group or a general patient population. Again, these comparisons might be peer-to-peer measures projected over time, for instance, comparing measures for each site, *A*, *B* and *C*, for *Patient 1*, $X_{n_A}, X_{n_A}, X_{n_A}, X_{n-1_A}, X_{n-1_A}, X_{n-1_A}, X_{n-2_A}, X_{n-2_A}, X_{n-2_A}, \dots, X_{0_A}, X_{0_A}, X_{0_A}$; $X_{n_B}, X_{n_B}, X_{n_B}, X_{n-1_B}, X_{n-1_B}, X_{n-1_B}, X_{n-2_B}, X_{n-2_B}, X_{n-2_B}, \dots, X_{0_B}, X_{0_B}, X_{0_B}$; $X_{n_C}, X_{n_C}, X_{n_C}, X_{n-1_C}, X_{n-1_C}, X_{n-1_C}, X_{n-2_C}, X_{n-2_C}, X_{n-2_C}, \dots, X_{0_C}, X_{0_C}, X_{0_C}$; comparing comparable measures for Site *A* for the three patients, $X_{n_A}, X_{n_A}, X_{n_A}, X_{n-1_A}, X_{n-1_A}, X_{n-1_A}, X_{n-2_A}, X_{n-2_A}, X_{n-2_A}, \dots, X_{0_A}, X_{0_A}, X_{0_A}$; or comparing the individual patient's measures to an average from the group. Similarly, these comparisons might be sibling-to-sibling measures for single snapshots, for instance, comparing comparable measures for Site *A* for the three patients, $X_{n_A}, X_{n_A}, X_{n_A}, Y_{n_A}, Y_{n_A}, Y_{n_A}$, and $Z_{n_A}, Z_{n_A}, Z_{n_A}$, or comparing those same comparable measures for Site *A* projected over time, for instance, $X_{n_A}, X_{n_A}, X_{n_A}, Y_{n_A}, Y_{n_A}, Y_{n_A}, Z_{n_A}, Z_{n_A}, Z_{n_A}, X_{n-1_A}, X_{n-1_A}, X_{n-1_A}, Y_{n-1_A}, Y_{n-1_A}, Y_{n-1_A}, Z_{n-1_A}, Z_{n-1_A}, Z_{n-1_A}, X_{n-2_A}, X_{n-2_A}, X_{n-2_A}, Y_{n-2_A}, Y_{n-2_A}, Y_{n-2_A}, Z_{n-2_A}, Z_{n-2_A}, Z_{n-2_A}, \dots, X_{0_A}, X_{0_A}, X_{0_A}, Y_{0_A}, Y_{0_A}, Y_{0_A}$, and $Z_{0_A}, Z_{0_A}, Z_{0_A}$.
- Other forms of site-specific comparisons, including comparisons between individual measures from non-comparable sites between patients, are feasible.
- Second, the individual measures can be compared on a disorder specific basis. The individual measures stored in each cardiac patient record can be logically grouped into measures relating to specific disorders and diseases, for

instance, congestive heart failure, myocardial infarction, respiratory distress, and atrial fibrillation. The foregoing comparison operations performed by the analysis module 53 are further described below with reference to FIGURES 17A-17D.

FIGURE 16 is a Venn diagram showing, by way of example, peer group overlap between the partial patient care records 205 of FIGURE 15. Each patient care record 205 includes characteristics data 250, 251, 252, including personal traits, demographics, medical history, and related personal data, for patients 1, 2 and 3, respectively. For example, the characteristics data 250 for patient 1 might include personal traits which include gender and age, such as male and an age between 40-45; a demographic of resident of New York City; and a medical history consisting of anterior myocardial infarction, congestive heart failure and diabetes. Similarly, the characteristics data 251 for patient 2 might include identical personal traits, thereby resulting in partial overlap 253 of characteristics data 250 and 251. Similar characteristics overlap 254, 255, 256 can exist between each respective patient. The overall patient population 257 would include the universe of all characteristics data. As the monitoring population grows, the number of patients with personal traits matching those of the monitored patient will grow, increasing the value of peer group referencing. Large peer groups, well matched across all monitored measures, will result in a well known natural history of disease and will allow for more accurate prediction of the clinical course of the patient being monitored. If the population of patients is relatively small, only some traits 256 will be uniformly present in any particular peer group. Eventually, peer groups, for instance, composed of 100 or more patients each, would evolve under conditions in which there would be complete overlap of substantially all salient data, thereby forming a powerful core reference group for any new patient being monitored.

FIGURES 17A-17D are flow diagrams showing a method for determining a reference baseline of individual patient status for use in an automated collection and analysis patient care system 260 in accordance with a further embodiment of the present invention. As with the method 140 of FIGURES 8A-8C, this method

is also implemented as a conventional computer program and performs the same set of steps as described with reference to FIGURES 8A-8C with the following additional functionality. As before, the method 260 operates in two phases: collection and processing of an initial reference baseline 209 (blocks 261-149) and monitoring using the reference baseline 209 (blocks 268-158). Thus, the patient care records are organized in the database 17 with a unique patient care record assigned to each individual patient (block 261).

Next, the reference baseline 209 is determined, as follows. First, the implantable medical device 202, external medical device 203, or the multiple sensors 204a, 204b record the initially collected device measures set 57 during the initial observation period (block 262), as described above with reference to FIGURE 5. The initially collected device measures set 57 is retrieved from the medical device (block 263) and sent over the internetwork 15 or similar communications link (block 264) and periodically received by the server system 16 (block 265). The initially collected device measures set 57 is stored into a patient care record in the database 17 for the individual patient 11 (block 266) and processed into the reference baseline 209 (block 147) which stores a reference measures set 59, as described above with reference to FIGURE 9. If the quality of life and symptom measures sets 211 are included as part of the reference baseline 209 (block 267), the quality of life and symptom measures sets 211 are processed (block 149), as described above with reference to FIGURE 10. Otherwise, the processing of quality of life and symptom measures is skipped (block 267).

Monitoring using the reference baseline 209 involves two iterative processing loops. The individual measures for each site are iteratively obtained in the first processing loop (blocks 268-273) and each disorder is iteratively analyzed in the second processing loop (blocks 274-278). Other forms of flow control are feasible, including recursive processing.

During each iteration of the first processing loop (blocks 268-273), the subsequently collected measures sets for an individual patient are retrieved from

the medical device or sensor located at the current site (block 269) using a programmer, interrogator, telemetered signals transceiver, and the like. The retrieved collected measures sets are sent, on a substantially regular basis, over the internetwork 15 or similar communications link (block 270) and periodically
5 received by the server system 16 (block 271). The collected measures sets are stored into the patient care record 205 in the database 17 for that individual patient (block 272).

During each iteration of the second processing loop (blocks 274-278), each of the subsequently collected device measures sets 58 are compared to the
10 reference measures in the reference baseline 209 (block 275). If the subsequently collected device measures sets 58 are substantially non-conforming (block 276), the patient care record is identified (block 277). Otherwise, monitoring continues as before for each disorder. In addition, the measures sets can be further evaluated and matched to diagnose specific medical disorders, such as congestive heart
15 failure, myocardial infarction, respiratory distress, and atrial fibrillation, as described in related, commonly-owned U.S. Patent applications, Serial No. 09/441,623, pending, filed November 16, 1999; Serial No. 09/441,612, pending, filed November 16, 1999; Serial No. 09/442, 125, pending, filed November 16, 1999; and Serial No. 09/441,613, pending, filed November 16, 1999, the
20 disclosures of which are incorporated herein by reference. In addition, multiple near-simultaneous disorders can be ordered and prioritized as part of the patient status indicator as described in the related, commonly-owned U.S. Patent application, Serial No. 09/441,405, pending, filed November 16, 1999, the disclosure of which is incorporated herein by reference.

25 Finally, if the time for a periodic reassessment has arrived or the subsequently collected device measures sets 58 are substantially non-conforming (block 279), the reference baseline 209 is reassessed (block 158) and a new reference baseline 209 determined, as described above with reference to FIGURE 11.

The determination of a reference baseline consisting of reference measures makes possible improved and more accurate treatment methodologies based on an algorithmic analysis of the subsequently collected data sets. Each successive introduction of a new collected device measures set into the database server
5 would help to continually improve the accuracy and effectiveness of the algorithms used.

While the invention has been particularly shown and described as referenced to the embodiments thereof, those skilled in the art will understand that the foregoing and other changes in form and detail may be made therein without
10 departing from the spirit and scope of the invention.

What is claimed is:

1 1. A system for determining a reference baseline of individual patient
2 status for use in an automated collection and analysis patient care system,
3 comprising:
4 a medical device having a sensor for monitoring at least one physiological
5 measure of an individual patient, the collected measures set comprising individual
6 measures which each relate to patient information recorded by the medical device;
7 a network server receiving a set of measures collected from a medical
8 device having a sensor for monitoring at least one physiological measure of an
9 individual patient, the collected device measures set comprising individual
10 measures which each relate to patient information recorded by the medical device
11 during an initial time period;
12 a database storing the collected device measures set into a patient care
13 record for the individual patient within a database organized to store one or more
14 patient care records; and
15 an application server processing the collected device measures set into a
16 set of reference measures, each reference measure being representative of at least
17 one of measured or derived patient information, and storing the reference
18 measures set into the patient care record as data in a reference baseline indicating
19 an initial patient status.

1 2. A system according to Claim 1, further comprising:
2 the network device repeatedly receiving one or more collected measures
3 sets which are each recorded by a sensor which monitors at least one
4 physiological measure of the individual patient, each such sensor monitoring a
5 site within the individual patient unique from the site monitored by any other such
6 sensor;
7 the database storing each collected measures set organized by specific site
8 into the patient care record for the individual patient within the database; and

9 the application server analyzing one or more of the site specific collected
10 measures sets in the patient care record for each site within the individual patient
11 relative to one or more other site specific collected measures sets stored in the
12 database to determine a patient status indicator.

1 3. A system according to Claim 2, wherein the one or more site
2 specific collected measures sets and the one or more other site specific collected
3 measures sets both store measures collected from the same relative site.

1 4. A system according to Claim 2, wherein the one or more site
2 specific collected measures sets and the one or more other site specific collected
3 measures sets both store measures collected from a different site.

1 5. A system according to Claim 1, further comprising:
2 a remote client recording a set of quality of life measures during the initial
3 time period;
4 the network server receiving the quality of life measures set from the
5 remote client;
6 the database storing the collected quality of life measures set into the
7 patient care record for the individual patient; and
8 the application server assimilating the collected quality of life measures
9 set into the reference baseline data stored in the patient care record.

1 6. A system according to Claim 1, further comprising:
2 the medical device monitoring the individual patient while the individual
3 patient is performing a prescribed set of timed physical stressors during the initial
4 time period.

1 7. A system according to Claim 1, further comprising:
2 a programmer reprogramming at least one of pacing interventions and
3 pacing modes of the medical device during the initial time period; and

4 the medical device monitoring the individual patient subsequent to the
5 reprogramming during the initial time period.

1 8. A system according to Claim 1, further comprising:
2 a feedback recorder recording feedback from the individual patient during
3 the initial time period;
4 the network server receiving the recorded feedback from the remote client;
5 the database storing the recorded feedback into the patient care record for
6 the individual patient; and
7 the application server assimilating the recorded feedback into the
8 reference baseline data stored in the patient care record.

1 9. A system according to Claim 8, wherein the feedback recorder
2 comprises at least one of an audio recorder, a digital camera, or a video camera.

1 10. A system according to Claim 1, further comprising:
2 a set of acceptance parameters stored within the database with each
3 acceptance parameter corresponding to the same type of patient information to
4 which at least one of the reference measures relates;
5 the application server further comprising:
6 an evaluation module analyzing the reference measures set for
7 each patient care record against the acceptance parameters set; and
8 an acceptance module identifying each patient care record storing a
9 reference measures set having at least one reference measure substantially non-
10 conforming to the corresponding acceptance parameter.

1 11. A system according to Claim 1, the application server further
2 comprising:
3 an analysis module analyzing one or more collected device measures sets
4 in the patient care record for the individual patient relative to the reference
5 measures sets in the reference baseline to determine a patient status indicator.

1 12. A system according to Claim 11, the application server further
2 comprising:
3 the analysis module analyzing one or more of the collected device
4 measures sets in the patient care record for the individual patient relative to one or
5 more other collected device measures sets stored in the database to further
6 determine the patient status indicator.

1 13. A system according to Claim 1, wherein each of the set of
2 reference measures is selected from the group comprising patient activity score,
3 posture, atrial electrical activity, ventricular electrical activity, cardiovascular
4 pressures, cardiac output, oxygenation, pulmonary measures, body temperature,
5 PR interval, QRS measures, QT interval, ST-T wave measures, potassium [K+]
6 level, sodium [Na+] level, glucose level, blood urea nitrogen and creatinine,
7 acidity (pH) level, hematocrit, hormonal levels, cardiac injury chemical tests,
8 myocardial blood flow, central nervous system injury chemical tests, central
9 nervous system (CNS) blood flow, and time of day and combinations and
10 derivatives thereof.

1 14. A method for determining a reference baseline of individual
2 patient status for use in an automated collection and analysis patient care system,
3 comprising:
4 receiving a set of measures collected from a medical device having a
5 sensor for monitoring at least one physiological measure of an individual patient,
6 the collected device measures set comprising individual measures which each
7 relate to patient information recorded by the medical device during an initial time
8 period;
9 storing the collected device measures set into a patient care record for the
10 individual patient within a database organized to store one or more patient care
11 records; and

12 processing the collected device measures set into a set of reference
13 measures, each reference measure being representative of at least one of measured
14 or derived patient information, and storing the reference measures set into the
15 patient care record as data in a reference baseline indicating an initial patient
16 status.

1 15. A method according to Claim 14, further comprising:
2 repeatedly receiving one or more collected measures sets which are each
3 recorded by a sensor which monitors at least one physiological measure of the
4 individual patient, each such sensor monitoring a site within the individual patient
5 unique from the site monitored by any other such sensor;
6 storing each collected measures set organized by specific site into the
7 patient care record for the individual patient within the database; and
8 analyzing one or more of the site specific collected measures sets in the
9 patient care record for each site within the individual patient relative to one or
10 more other site specific collected measures sets stored in the database to
11 determine a patient status indicator.

1 16. A method according to Claim 15, wherein the one or more site
2 specific collected measures sets and the one or more other site specific collected
3 measures sets both store measures collected from the same relative site.

1 17. A method according to Claim 15, wherein the one or more site
2 specific collected measures sets and the one or more other site specific collected
3 measures sets both store measures collected from a different site.

1 18. A method according to Claim 14, further comprising:
2 receiving a set of quality of life measures recorded by the individual
3 patient during the initial time period;
4 storing the collected quality of life measures set into the patient care
5 record for the individual patient within the database; and

6 assimilating the collected quality of life measures set into the reference
7 baseline data stored in the patient care record.

1 19. A method according to Claim 14, further comprising:
2 monitoring the individual patient using the medical device while the
3 individual patient is performing a prescribed set of timed physical stressors during
4 the initial time period.

1 20. A method according to Claim 14, further comprising:
2 reprogramming at least one of pacing interventions and pacing modes of
3 the medical device during the initial time period; and
4 monitoring the individual patient using the medical device subsequent to
5 the reprogramming during the initial time period.

1 21. A method according to Claim 14, further comprising:
2 receiving feedback recorded by the individual patient during the initial
3 time period;
4 storing the recorded feedback into the patient care record for the
5 individual patient within the database; and
6 assimilating the recorded feedback into the reference baseline data stored
7 in the patient care record.

1 22. A method according to Claim 14, further comprising:
2 defining a set of acceptance parameters with each acceptance parameter
3 corresponding to the same type of patient information to which at least one of the
4 reference measures relates;
5 analyzing the reference measures set for each patient care record against
6 the acceptance parameters set; and
7 identifying each patient care record storing a reference measures set
8 having at least one reference measure substantially non-conforming to the
9 corresponding acceptance parameter.

1 23. A method according to Claim 14, further comprising:
2 analyzing one or more collected device measures sets in the patient care
3 record for the individual patient relative to the reference measures sets in the
4 reference baseline to determine a patient status indicator.

1 24. A method according to Claim 23, further comprising:
2 analyzing one or more of the collected device measures sets in the patient
3 care record for the individual patient relative to one or more other collected
4 device measures sets stored in the database to further determine the patient status
5 indicator.

1 25. A method according to Claim 14, wherein each of the set of
2 reference measures is selected from the group comprising patient activity score,
3 posture, atrial electrical activity, ventricular electrical activity, cardiovascular
4 pressures, cardiac output, oxygenation, pulmonary measures, body temperature,
5 PR interval, QRS measures, QT interval, ST-T wave measures, potassium [K+]
6 level, sodium [Na+] level, glucose level, blood urea nitrogen and creatinine,
7 acidity (pH) level, hematocrit, hormonal levels, cardiac injury chemical tests,
8 myocardial blood flow, central nervous system injury chemical tests, central
9 nervous system (CNS) blood flow, and time of day and combinations and
10 derivatives thereof.

1 26. A computer-readable storage medium holding code for
2 determining a reference baseline of individual patient status for use in an
3 automated collection and analysis patient care system, comprising:
4 receiving a set of measures collected from a medical device having a
5 sensor for monitoring at least one physiological measure of an individual patient,
6 the collected device measures set comprising individual measures which each
7 relate to patient information recorded by the medical device during an initial time
8 period;

9 storing the collected device measures set into a patient care record for the
10 individual patient within a database organized to store one or more patient care
11 records; and

12 processing the collected device measures set into a set of reference
13 measures, each reference measure being representative of at least one of measured
14 or derived patient information, and storing the reference measures set into the
15 patient care record as data in a reference baseline indicating an initial patient
16 status.

1 27. A storage medium according to Claim 26, further comprising:
2 repeatedly receiving one or more collected measures sets which are each
3 recorded by a sensor which monitors at least one physiological measure of the
4 individual patient, each such sensor monitoring a site within the individual patient
5 unique from the site monitored by any other such sensor;
6 storing each collected measures set organized by specific site into the
7 patient care record for the individual patient within the database; and
8 analyzing one or more of the site specific collected measures sets in the
9 patient care record for each site within the individual patient relative to one or
10 more other site specific collected measures sets stored in the database to
11 determine a patient status indicator.

1 28. A storage medium according to Claim 26, further comprising:
2 receiving a set of quality of life measures recorded by the individual
3 patient during the initial time period;
4 storing the collected quality of life measures set into the patient care
5 record for the individual patient within the database; and
6 assimilating the collected quality of life measures set into the reference
7 baseline data stored in the patient care record.

1 29. A storage medium according to Claim 26, further comprising:

2 monitoring the individual patient using the medical device while the
3 individual patient is performing a prescribed set of timed physical stressors during
4 the initial time period.

1 30. A storage medium according to Claim 26, further comprising:
2 reprogramming at least one of pacing interventions and pacing modes of
3 the medical device during the initial time period; and
4 monitoring the individual patient using the medical device subsequent to
5 the reprogramming during the initial time period.

1 31. A storage medium according to Claim 26, further comprising:
2 receiving feedback recorded by the individual patient during the initial
3 time period;
4 storing the recorded feedback into the patient care record for the
5 individual patient within the database; and
6 assimilating the recorded feedback into the reference baseline data stored
7 in the patient care record.

1 32. A storage medium according to Claim 26, further comprising:
2 defining a set of acceptance parameters with each acceptance parameter
3 corresponding to the same type of patient information to which at least one of the
4 reference measures relates;
5 analyzing the reference measures set for each patient care record against
6 the acceptance parameters set; and
7 identifying each patient care record storing a reference measures set
8 having at least one reference measure substantially non-conforming to the
9 corresponding acceptance parameter.

1 33. A storage medium according to Claim 26, further comprising:
2 analyzing one or more collected device measures sets in the patient care
3 record for the individual patient relative to the reference measures sets in the
4 reference baseline to determine a patient status indicator.

- 1 34. A storage medium according to Claim 33, further comprising:
- 2 analyzing one or more of the collected device measures sets in the patient
- 3 care record for the individual patient relative to one or more other collected
- 4 device measures sets stored in the database to further determine the patient status
- 5 indicator.

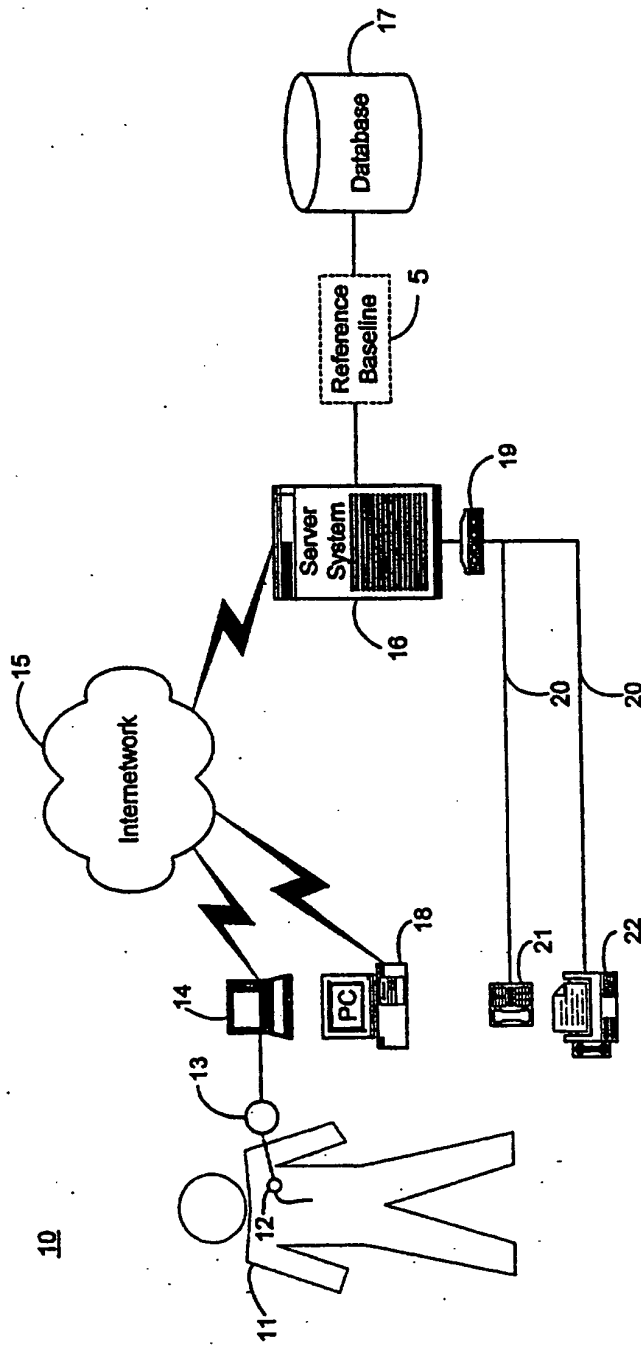


FIGURE 1A

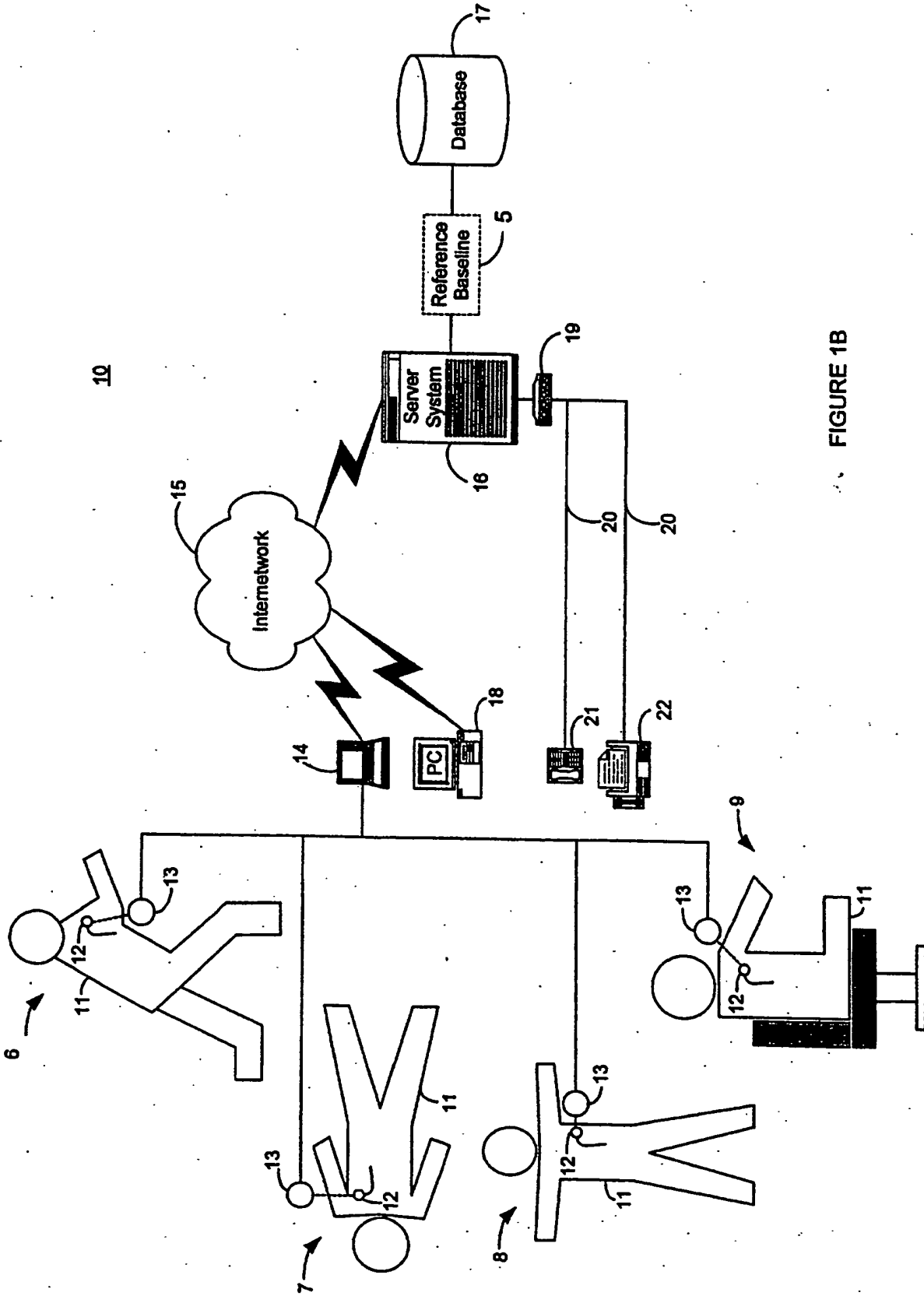


FIGURE 1B

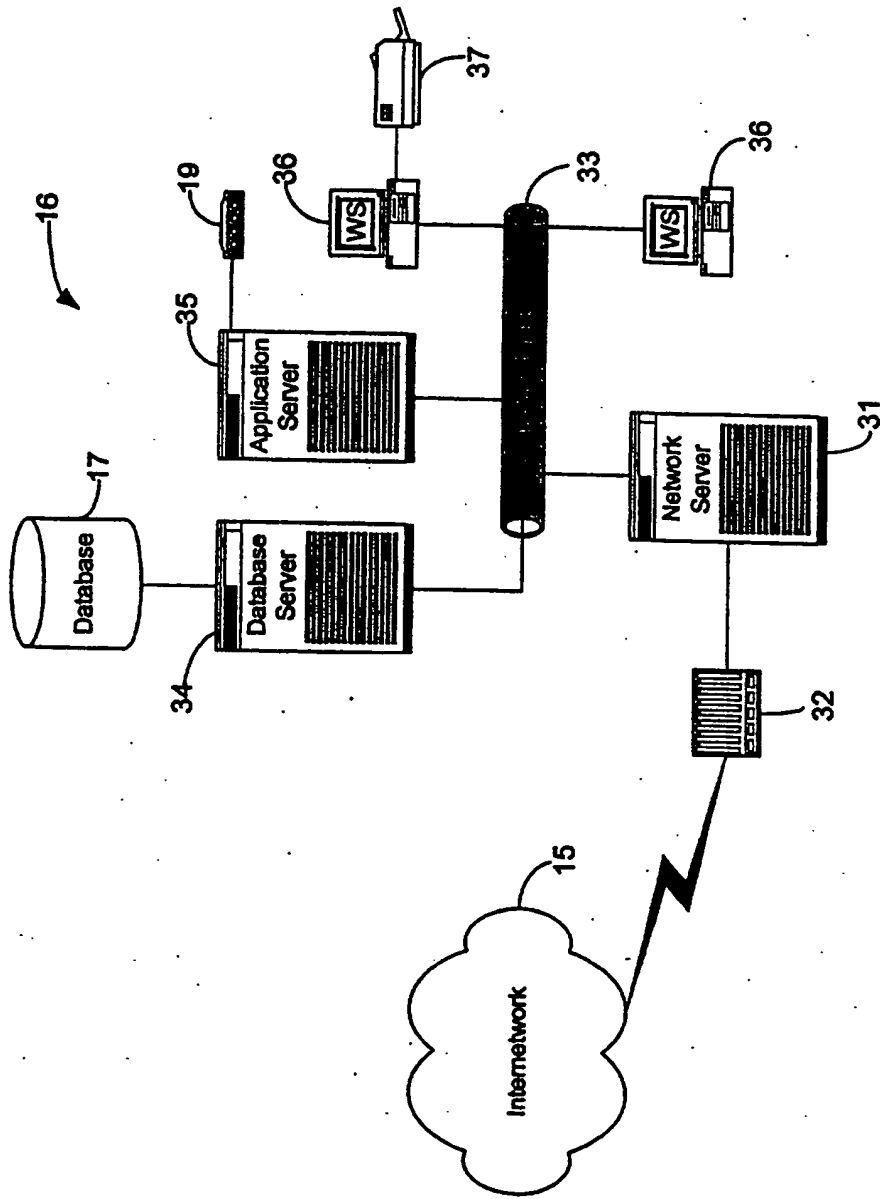


FIGURE 2

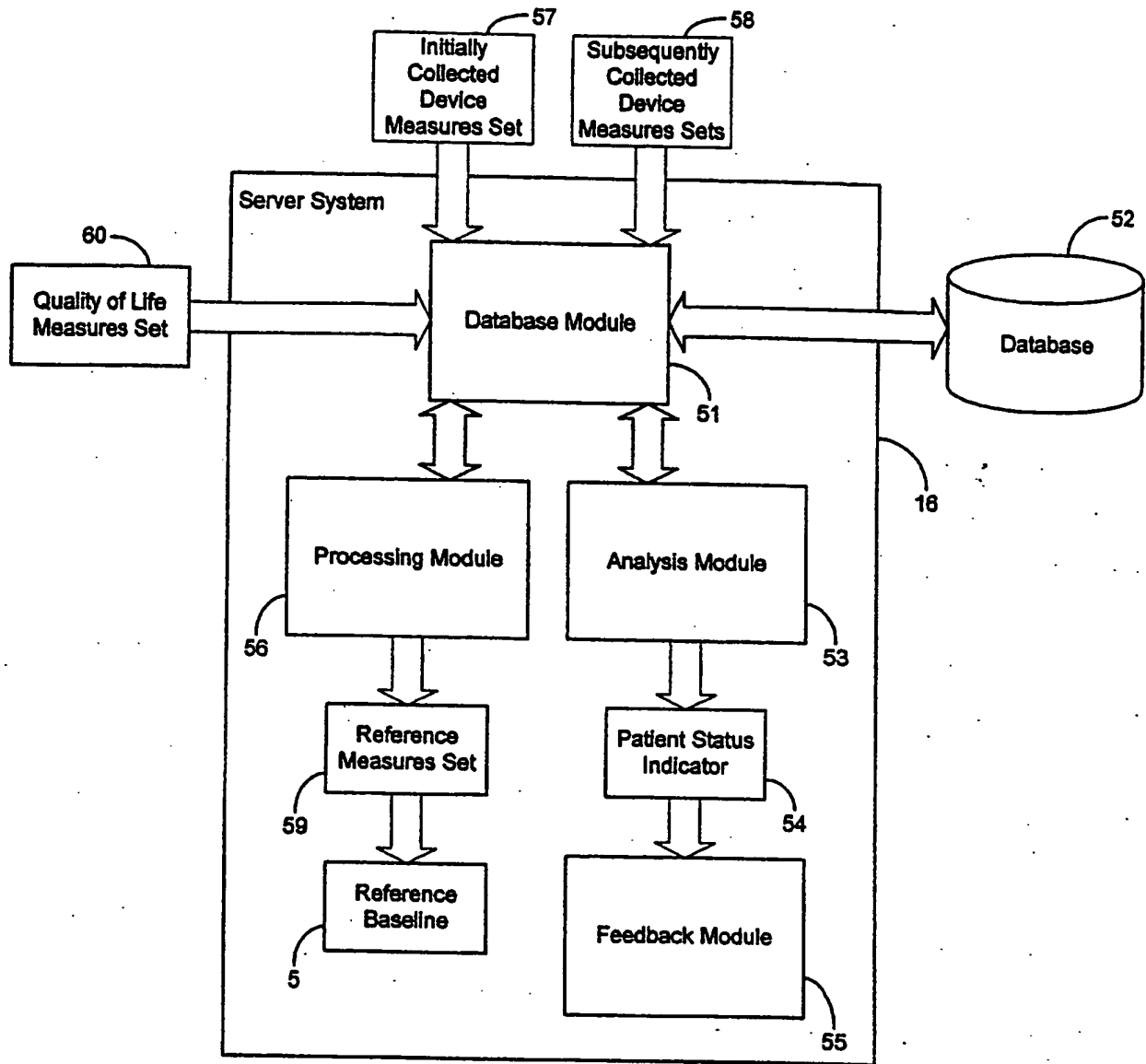


FIGURE 3

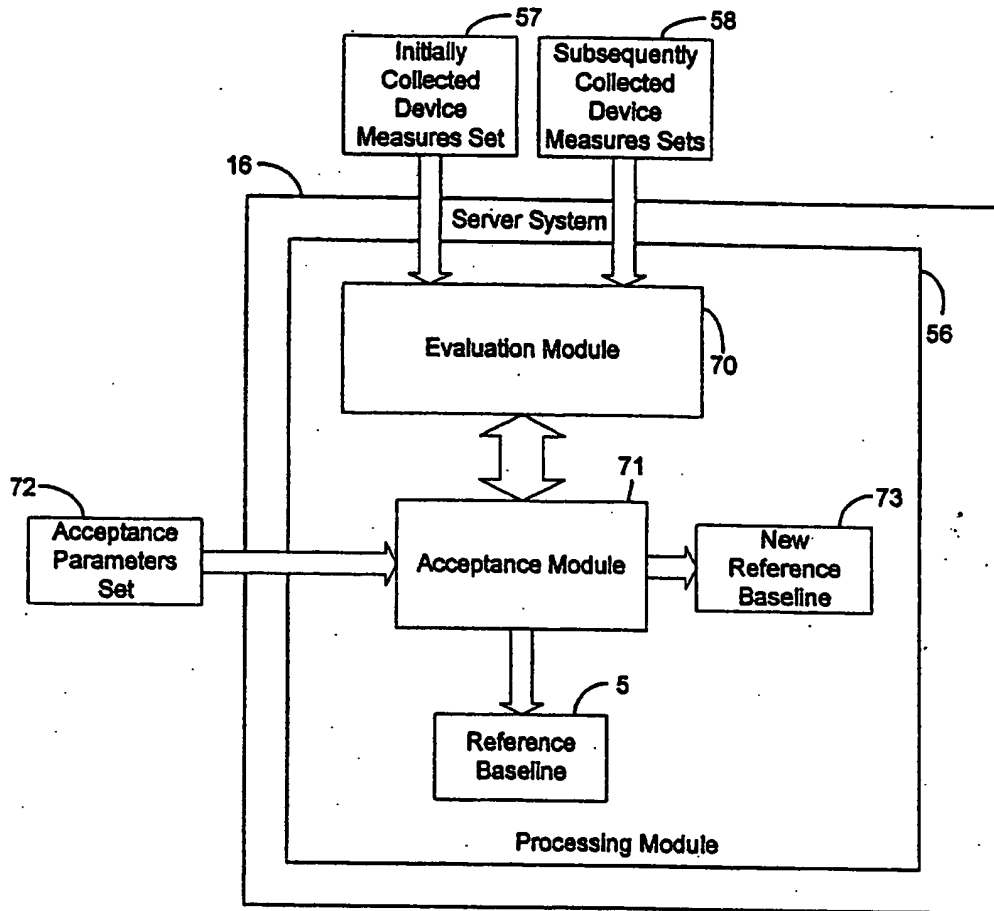


FIGURE 4

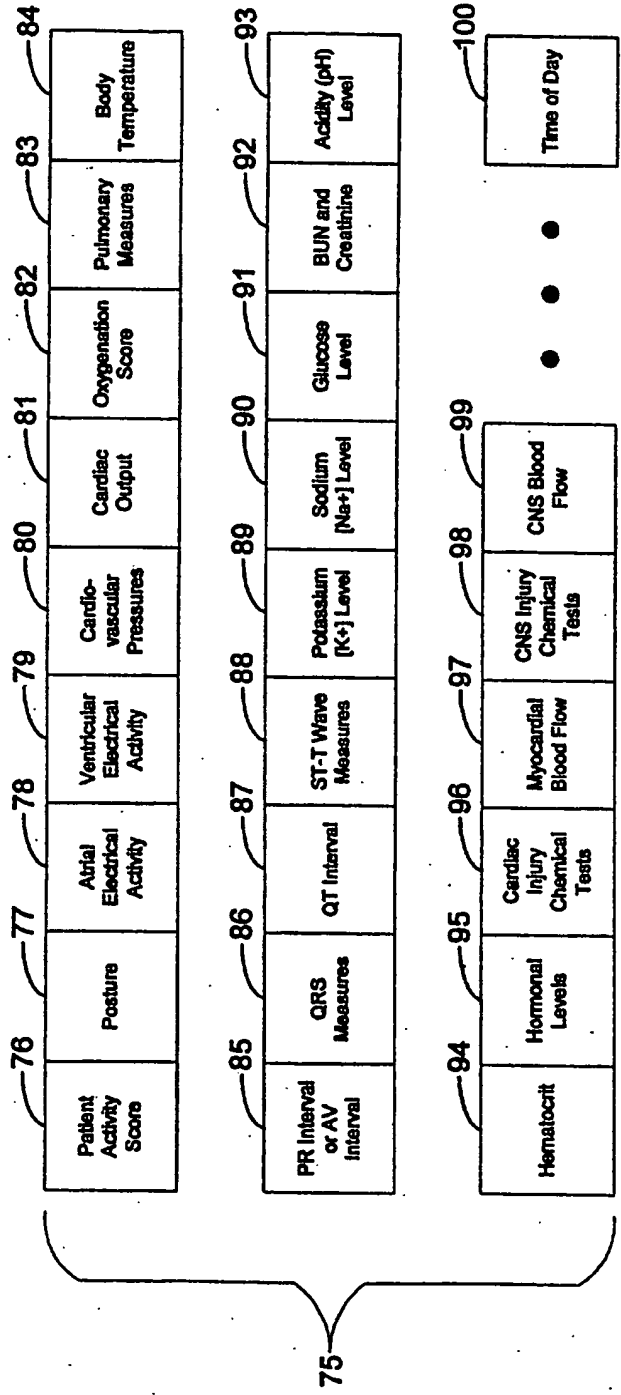


FIGURE 5

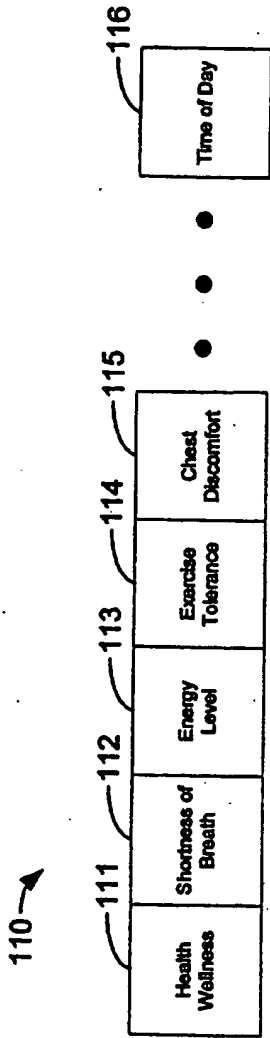


FIGURE 6

120 →

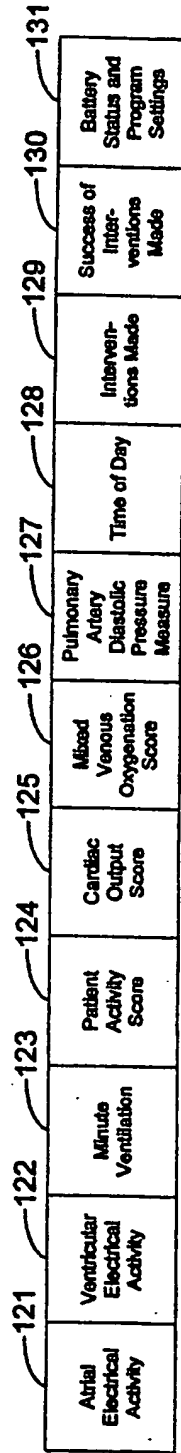


FIGURE 7

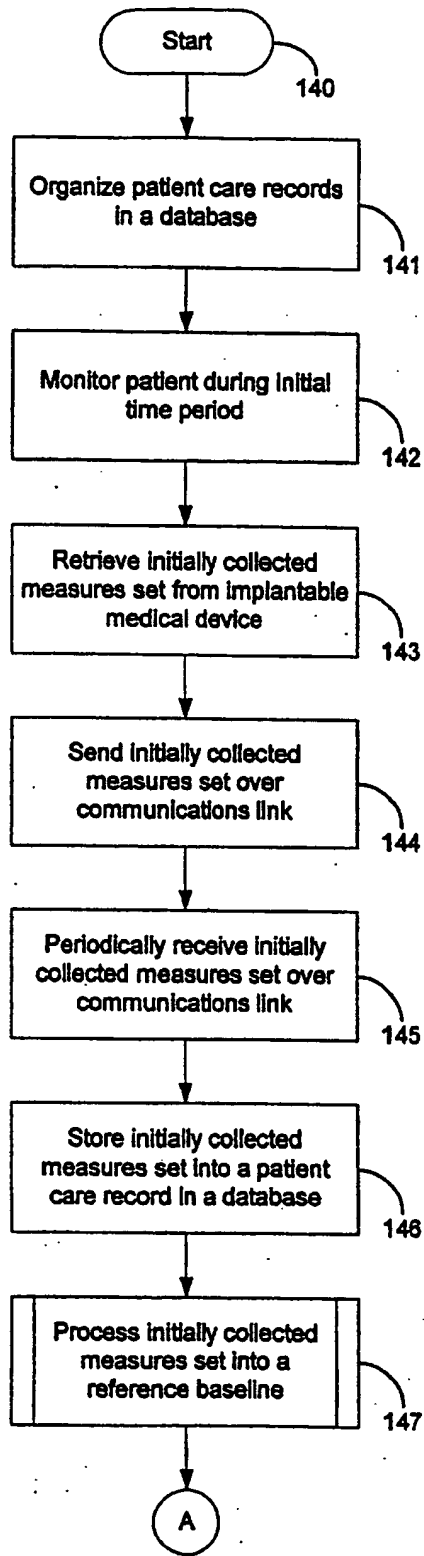


FIGURE 8A

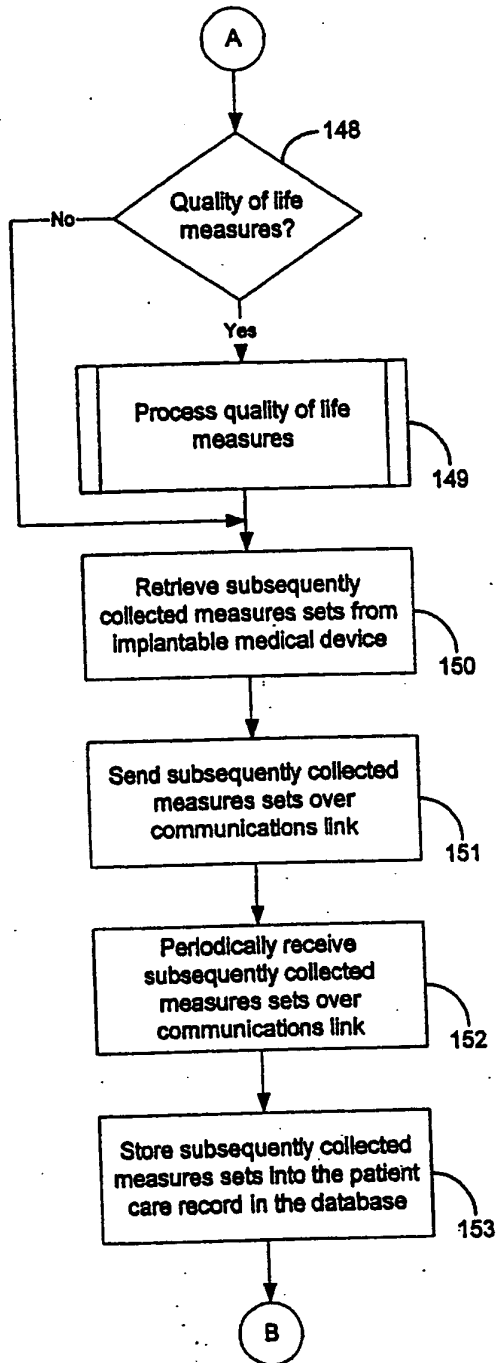


FIGURE 8B

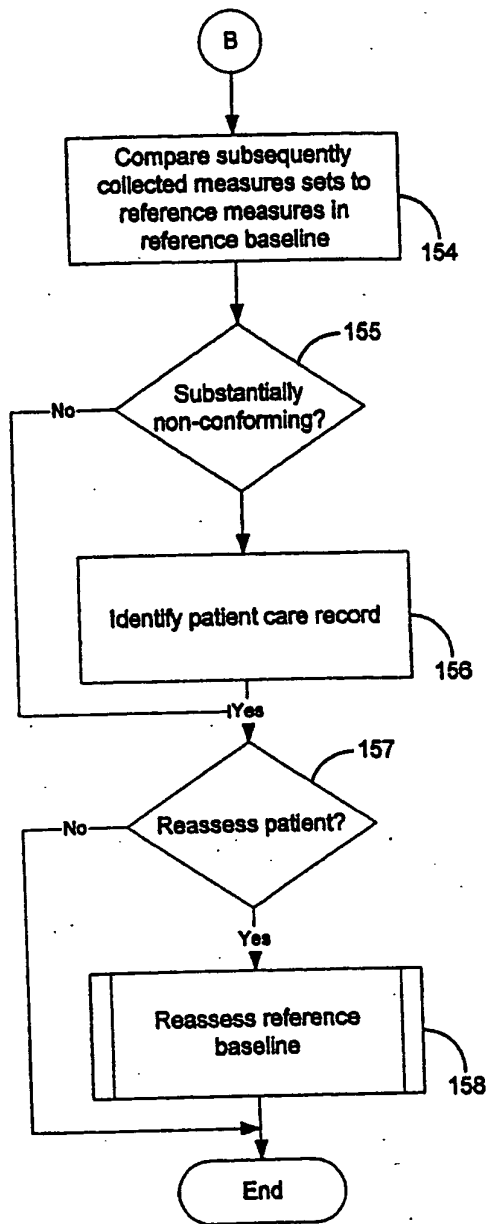


FIGURE 8C

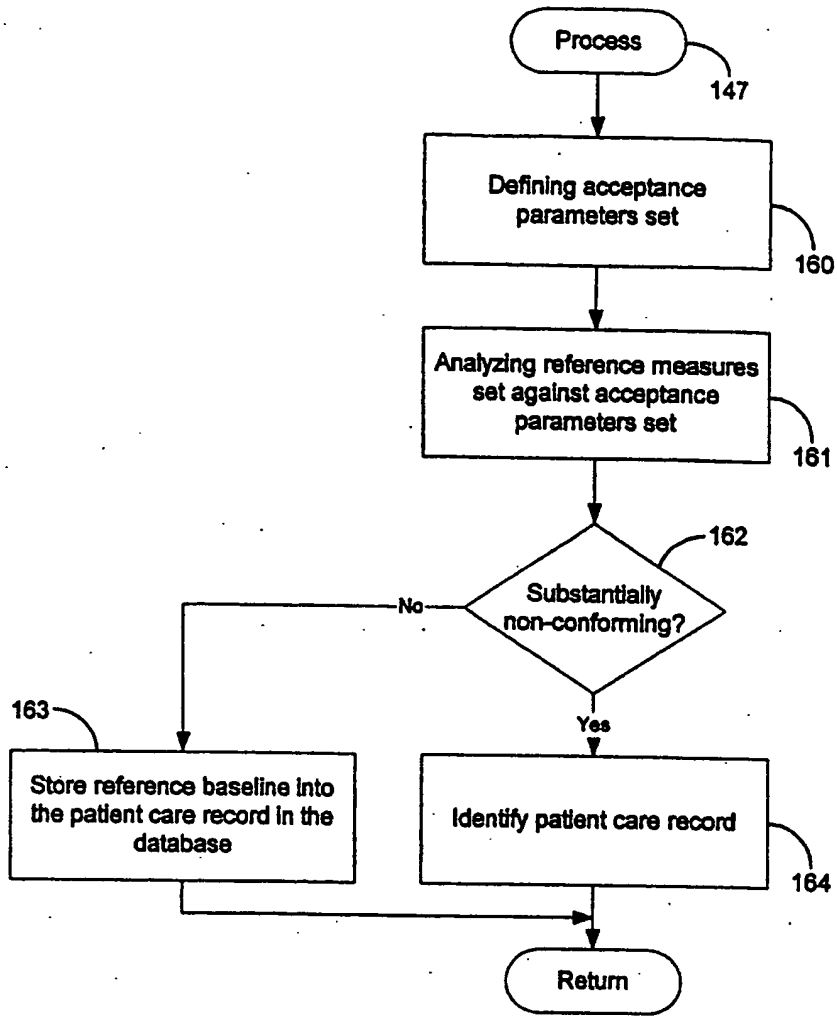


FIGURE 9

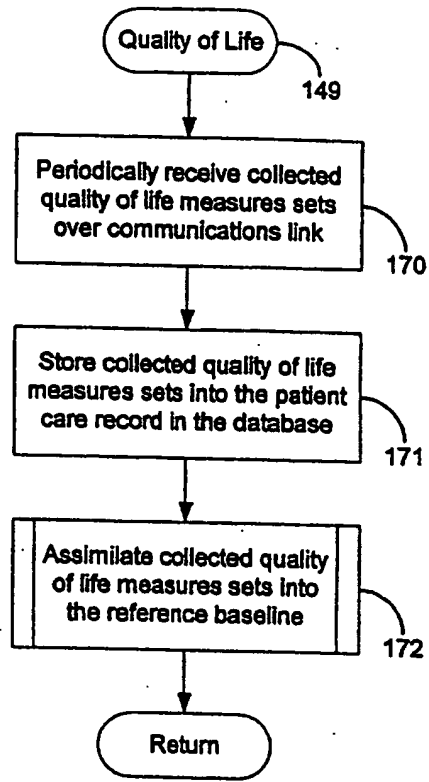


FIGURE 10

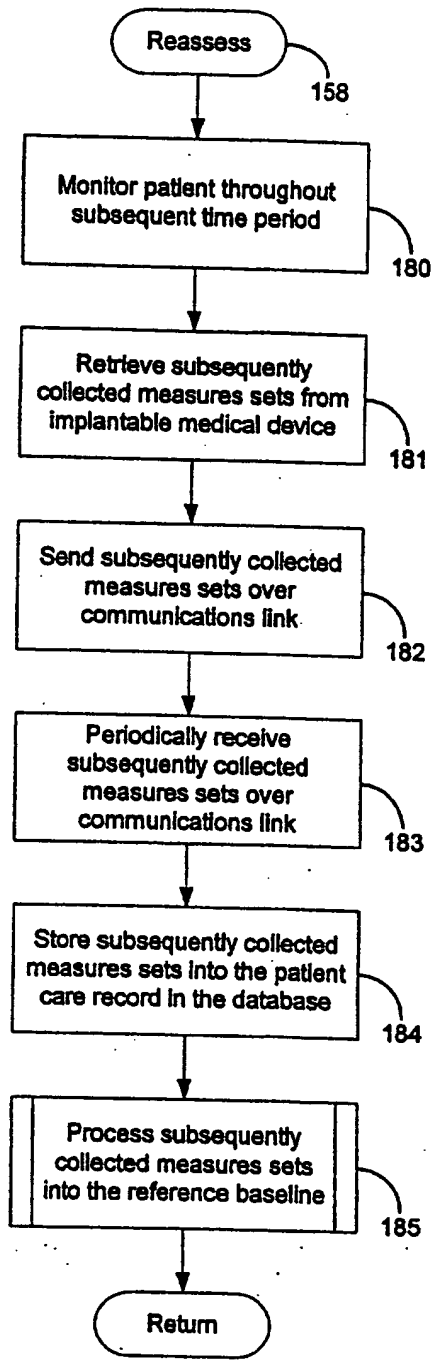


FIGURE 11

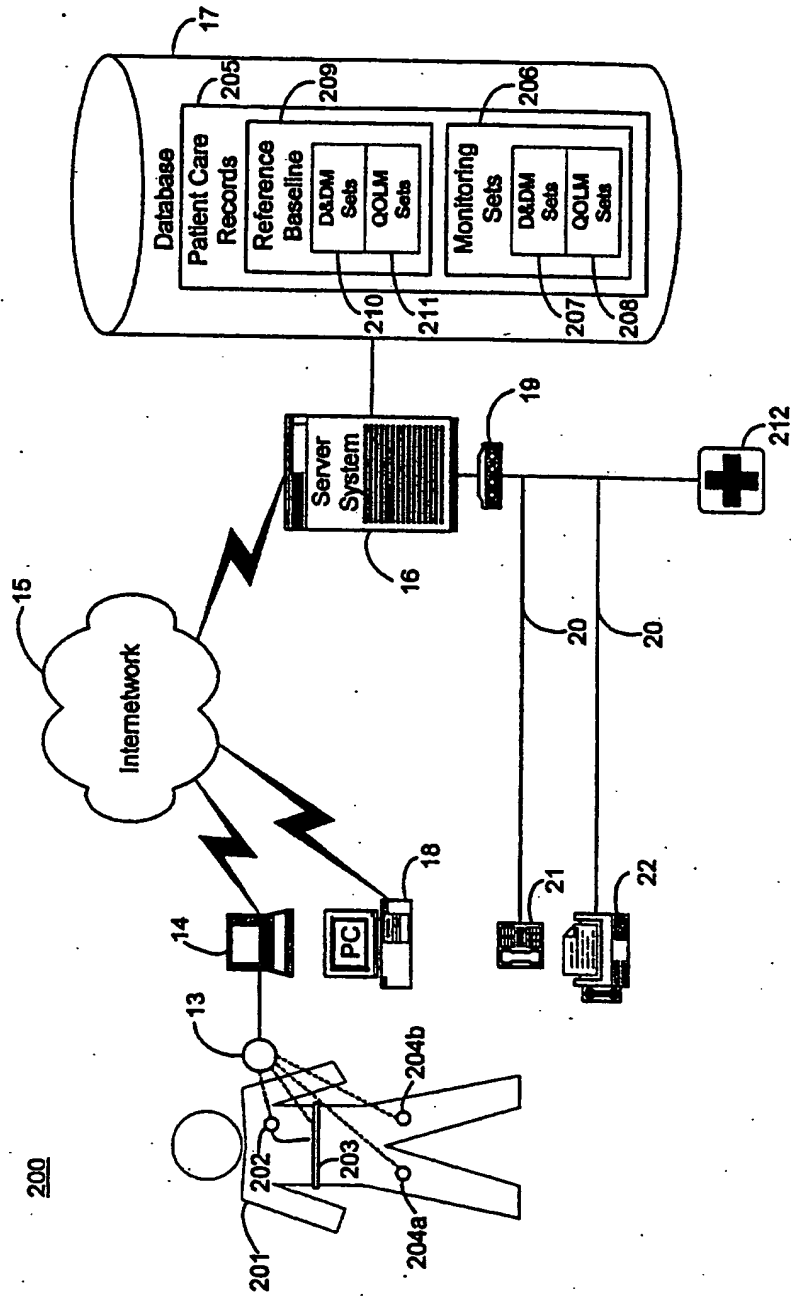


FIGURE 12A

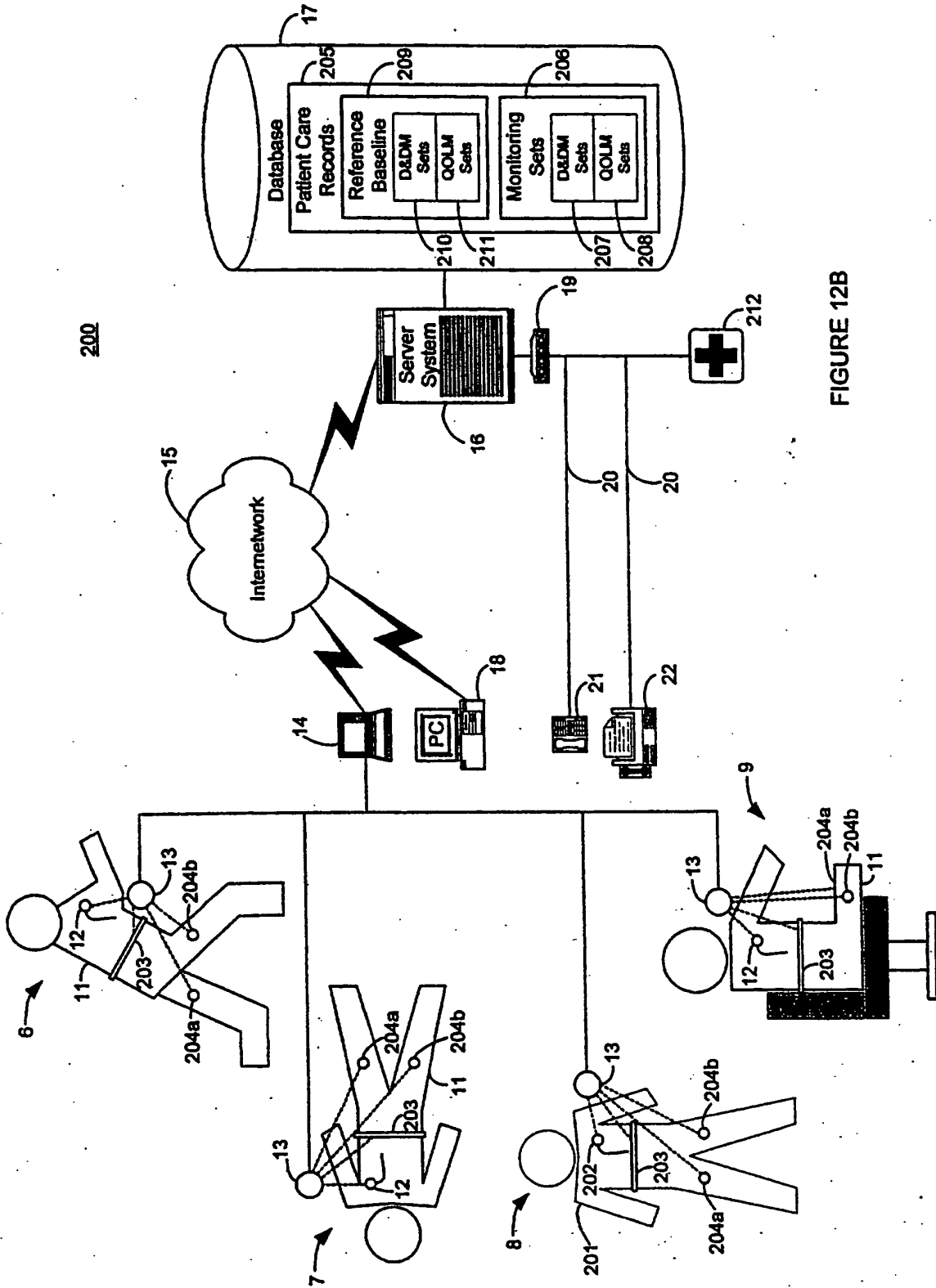


FIGURE 12B

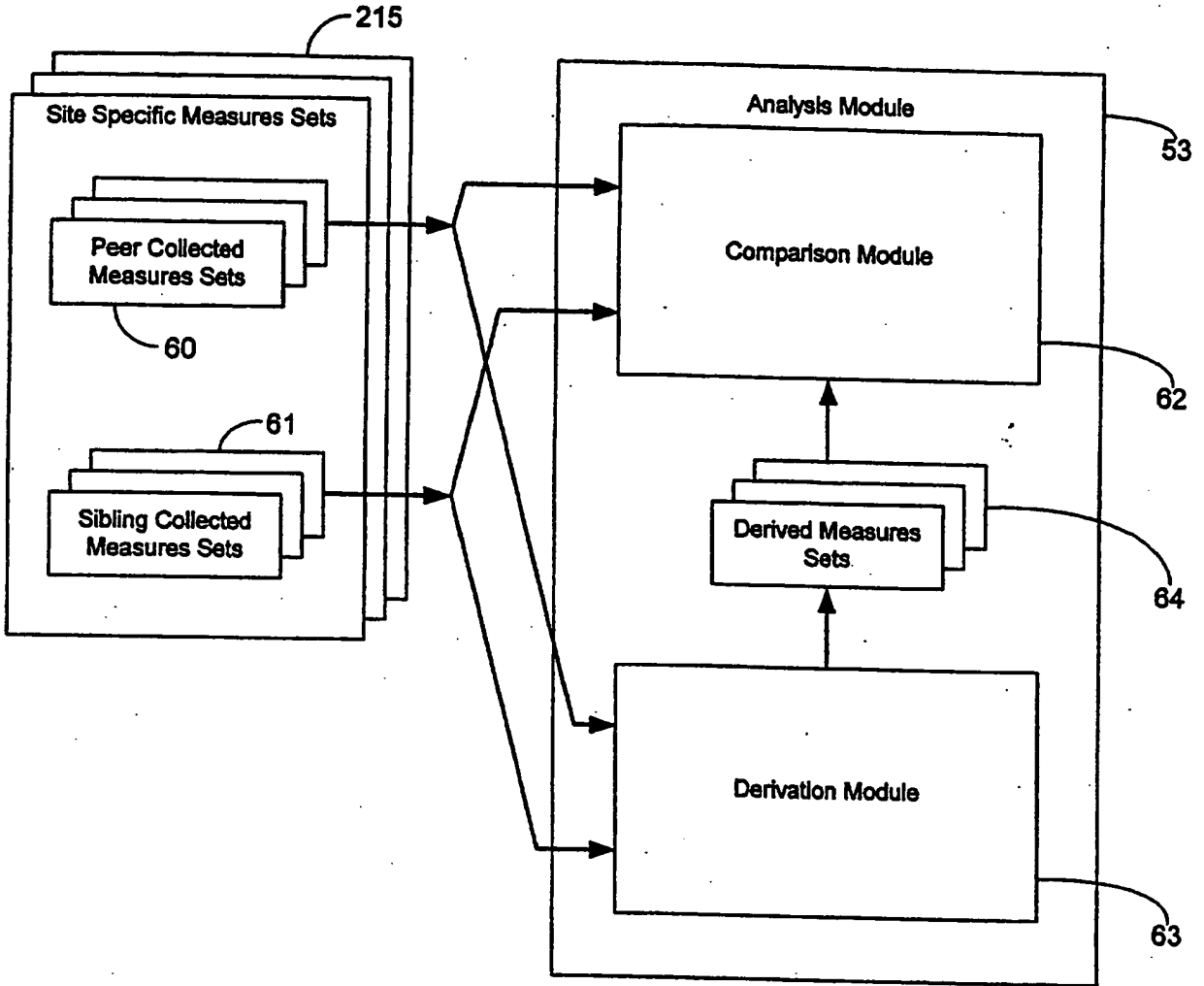


FIGURE 13

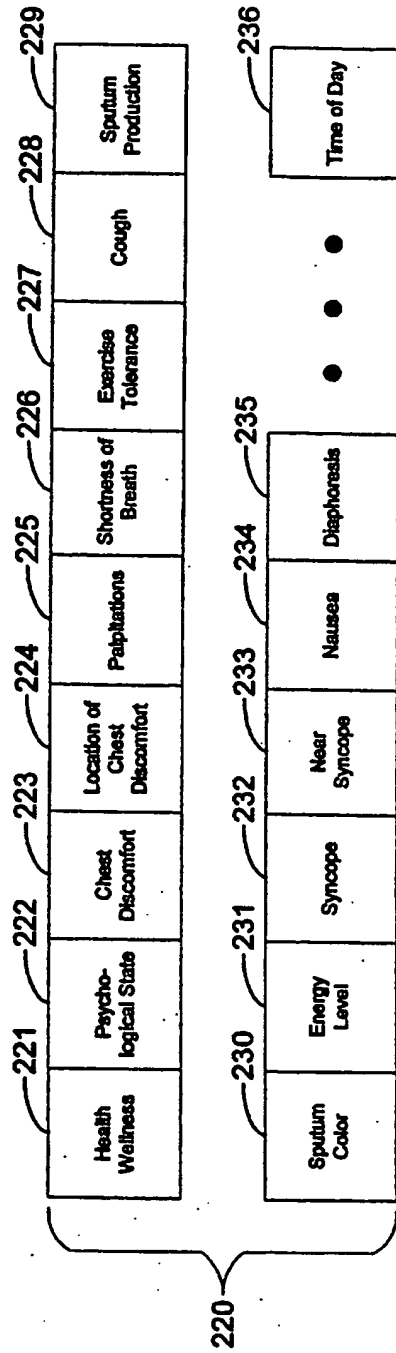


FIGURE 14

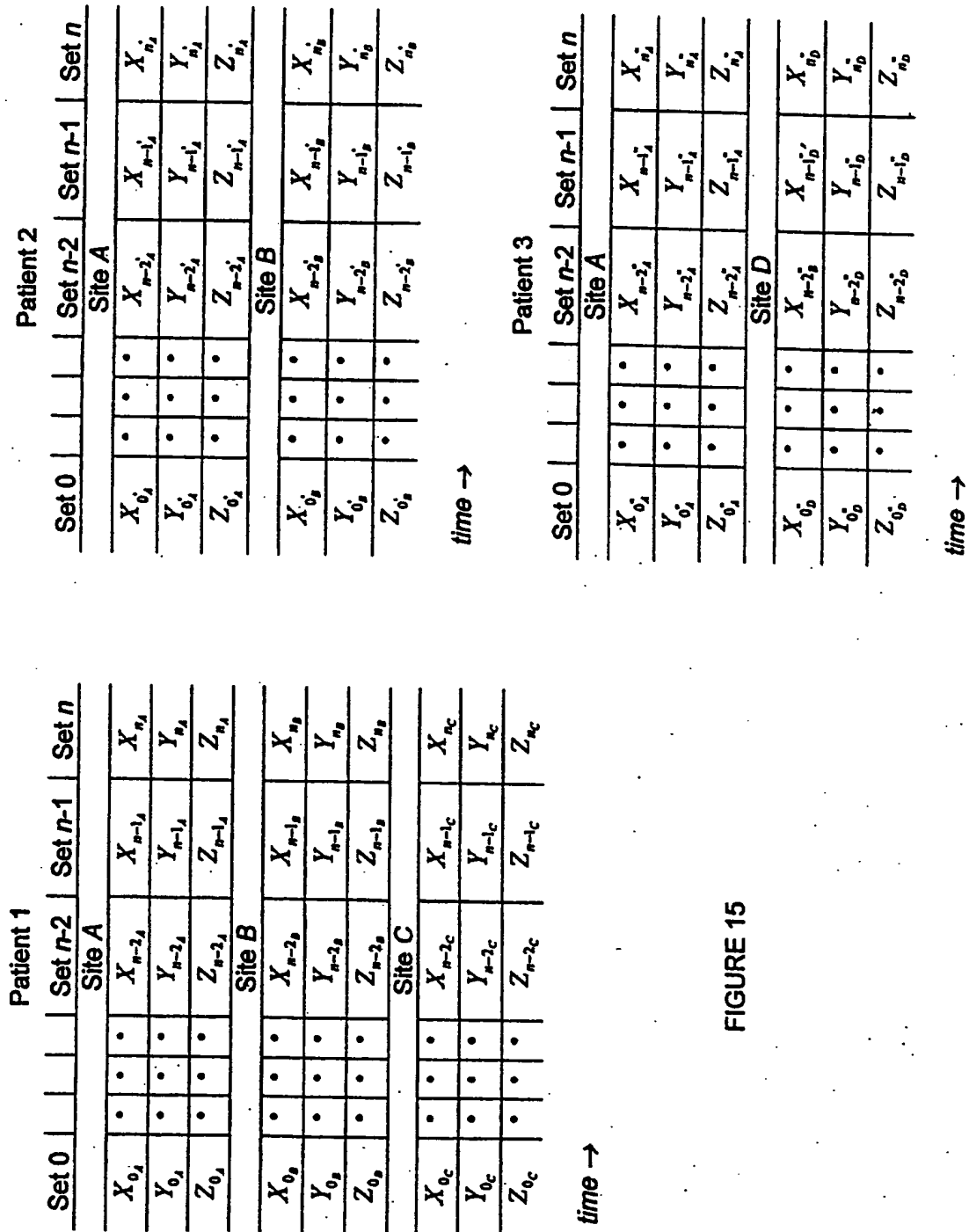


FIGURE 15

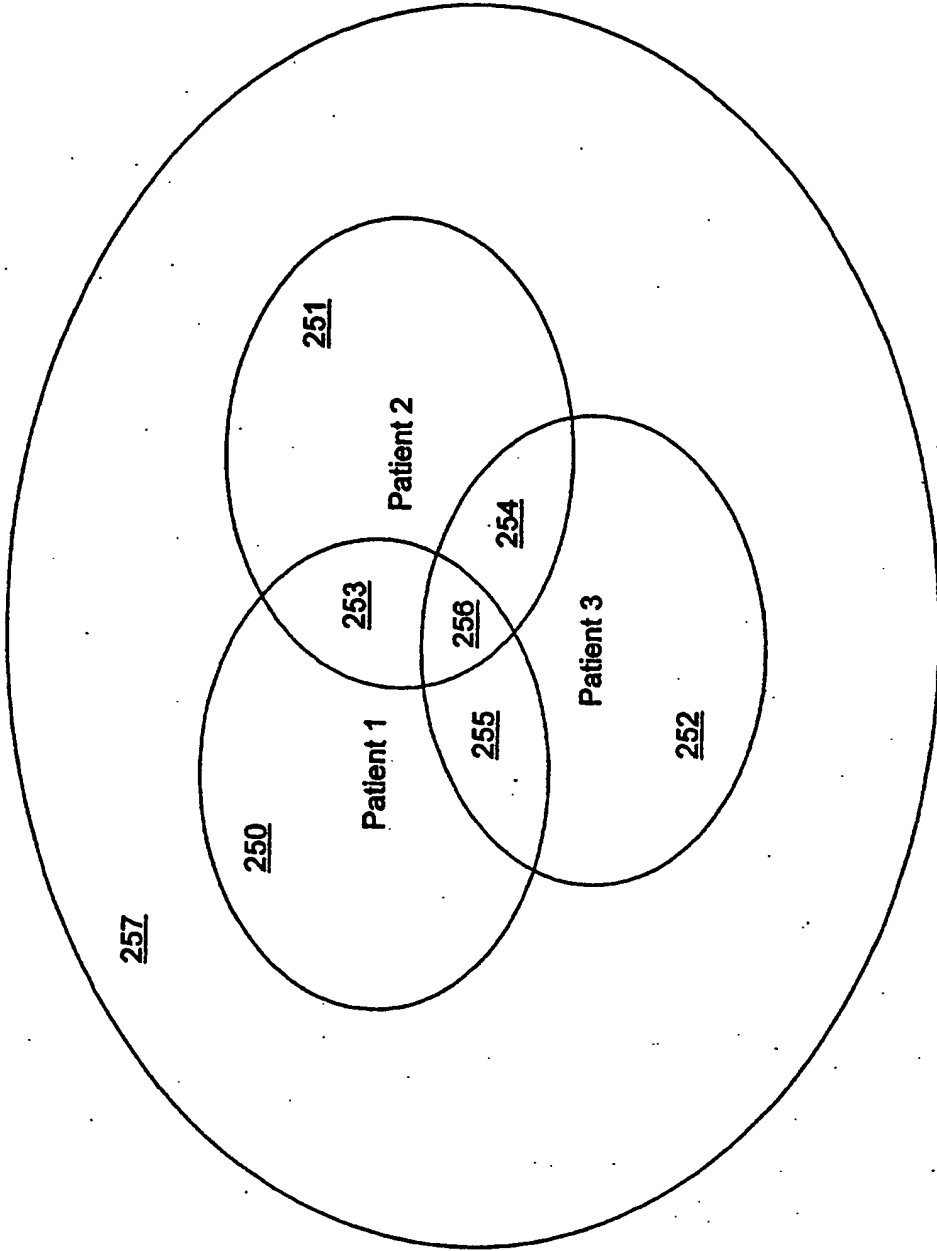


FIGURE 16

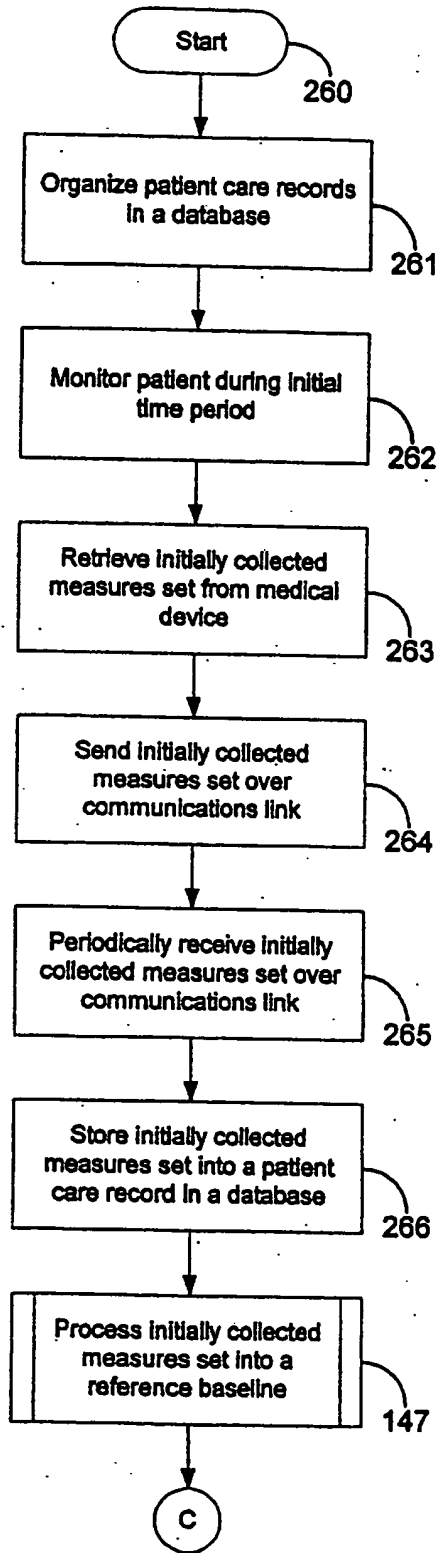


FIGURE 17A

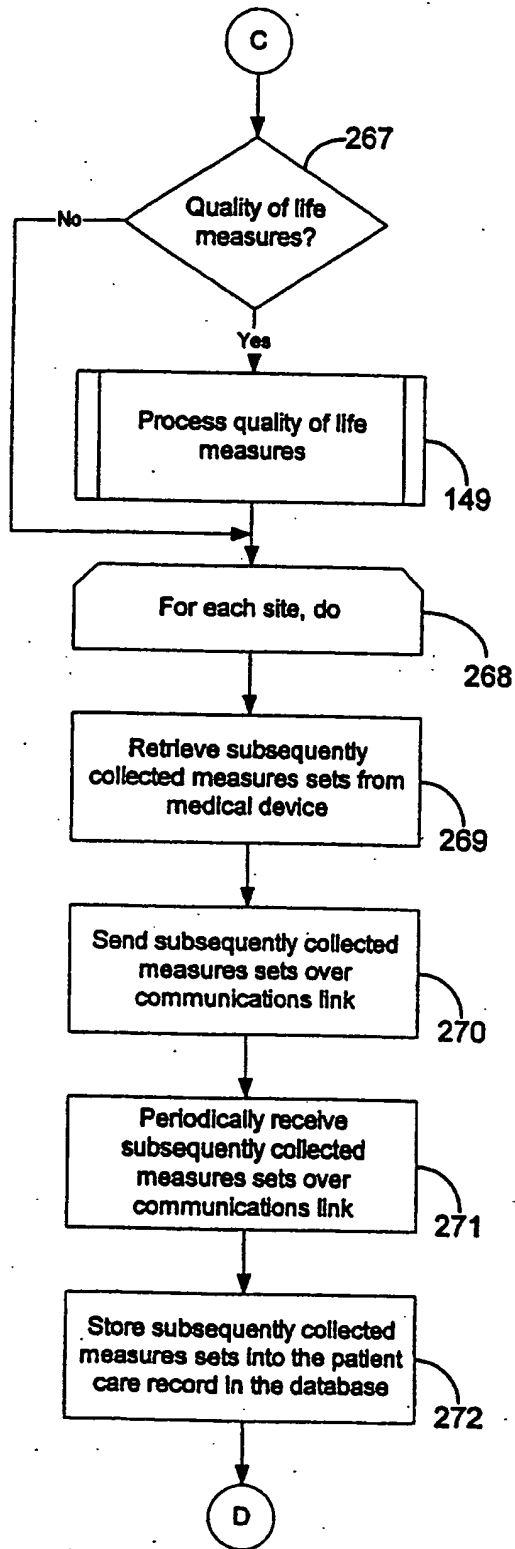


FIGURE 17B

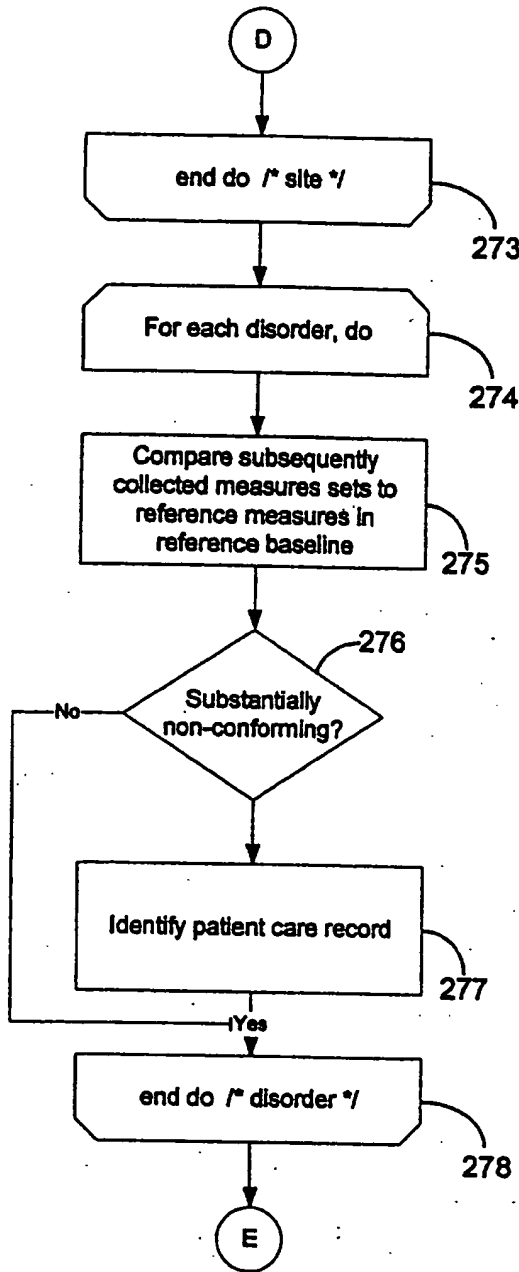


FIGURE 17C

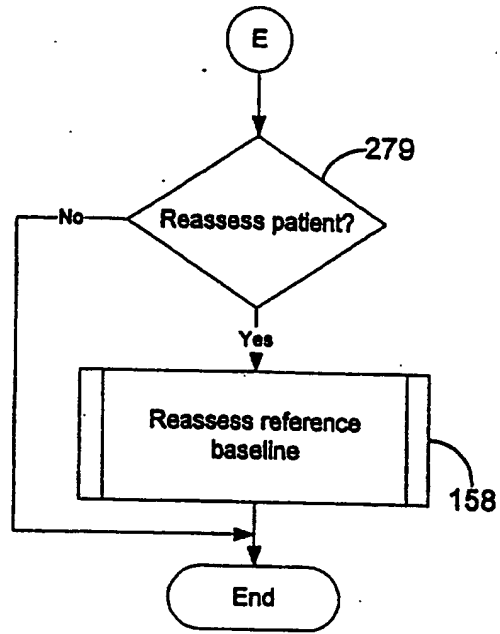


FIGURE 17D

**This Page is Inserted by IFW Indexing and Scanning
Operations and is not part of the Official Record**

BEST AVAILABLE IMAGES

Defective images within this document are accurate representations of the original documents submitted by the applicant.

Defects in the images include but are not limited to the items checked:

- BLACK BORDERS**
- IMAGE CUT OFF AT TOP, BOTTOM OR SIDES**
- FADED TEXT OR DRAWING**
- BLURRED OR ILLEGIBLE TEXT OR DRAWING**
- SKEWED/SLANTED IMAGES**
- COLOR OR BLACK AND WHITE PHOTOGRAPHS**
- GRAY SCALE DOCUMENTS**
- LINES OR MARKS ON ORIGINAL DOCUMENT**
- REFERENCE(S) OR EXHIBIT(S) SUBMITTED ARE POOR QUALITY**
- OTHER:** _____

IMAGES ARE BEST AVAILABLE COPY.

As rescanning these documents will not correct the image problems checked, please do not report these problems to the IFW Image Problem Mailbox.